



Central East (HHS Region 3)

MHTTC

Mental Health Technology Transfer Center Network

Funded by Substance Abuse and Mental Health Services Administration

School Mental Health Virtual Learning Series

July 2020-June 2021



School Health Assessment and
Performance Evaluation System

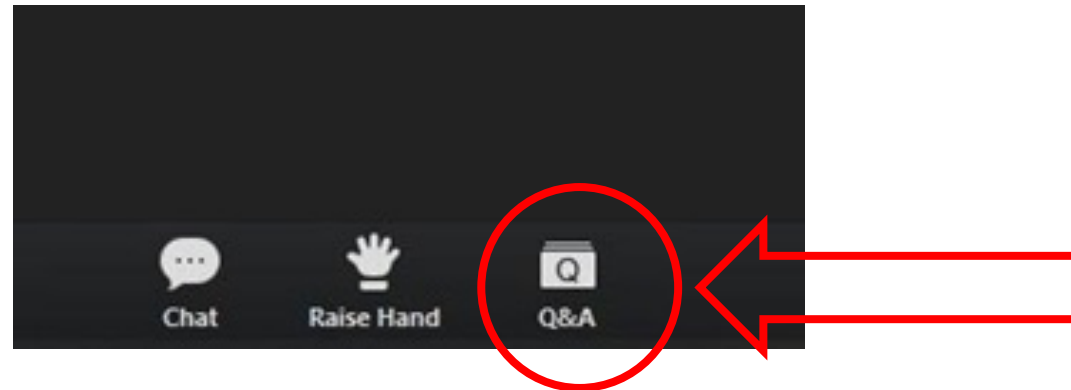
August 5, 2020



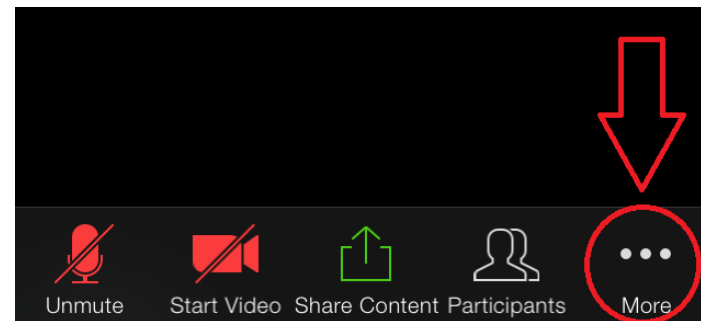
Technology Support

- Slides will be posted on the NCSMH website (www.schoolmentalhealth.org) and emailed after the presentation to all registrants
- Please type questions for the panelists into the Q&A box.
- Use chat box for sharing resources, comments, and responding to speaker

Web



Mobile App





Central East (HHS Region 3)

MHTTC Mental Health Technology Transfer Center Network
Funded by Substance Abuse and Mental Health Services Administration



UNIVERSITY of MARYLAND
SCHOOL OF MEDICINE



Oscar Morgan
MHTTC Project Director



Michael Thompson
MHTTC Sr. TA Specialist



Tiffany Beason
NCSMH Faculty



Lorraine Bernstein
Coordinator



Taneisha Carter
Senior RA



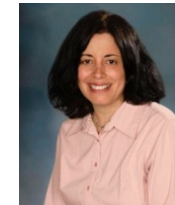
Elizabeth Connors
NCSMH Faculty



Dana Cunningham
PGSMHI Director



Sharon Hoover
NCSMH Co-Director



Nancy Lever
NCSMH Co-Director



Perrin Robinson
Communications Director



Britt Patterson
NCSMH Faculty



Kris Scardamalia
NCSMH Faculty

Central East Geographical Area of Focus

HHS REGION 3

Delaware

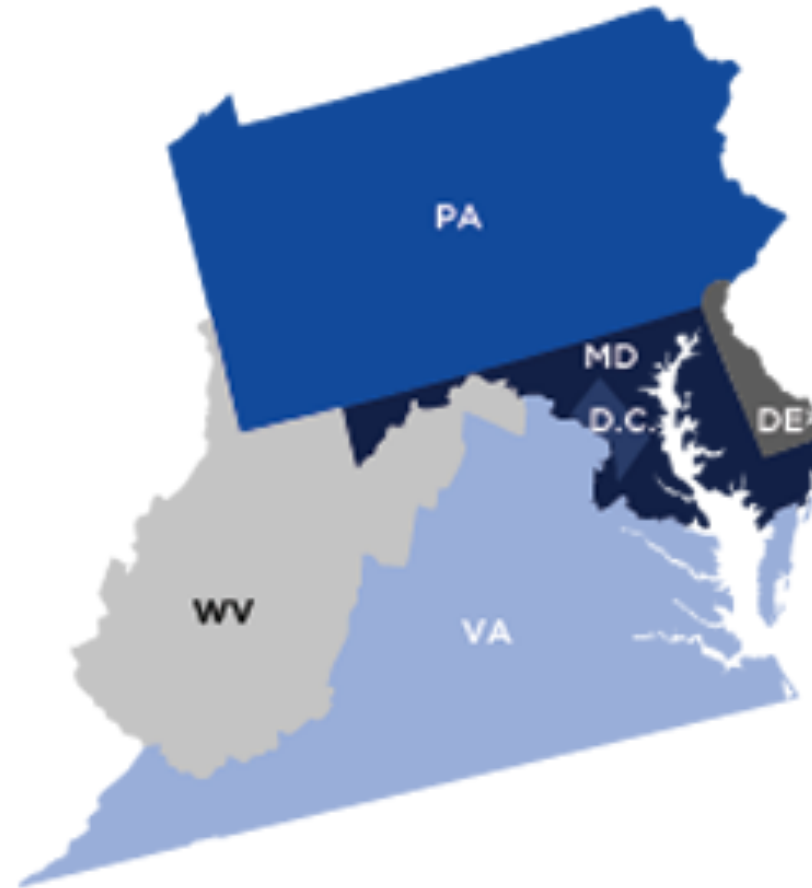
District of Columbia

Maryland

Pennsylvania

Virginia

West Virginia





What Does Central East MHTTC Do?

Actions

- **Accelerate** the adoption and implementation of evidence-based and promising treatment and recovery-oriented practices and services
- **Strengthen** the awareness, knowledge, and skills of the behavioral and mental health and prevention workforce, and other stakeholders, that address the needs of people with behavioral health disorders
- **Foster regional** and national alliances among culturally diverse practitioners, researchers, policy makers, funders, and the recovery community
- **Ensure** the availability and delivery of publicly available, free of charge, training and technical assistance to the behavioral and mental health field

National Center for School Mental Health

MISSION:

Strengthen policies and programs in school mental health to improve learning and promote success for America's youth

- Focus on advancing school mental health policy, research, practice, and training
- Shared family-schools-community mental health agenda

Directors: Drs. Nancy Lever & Sharon Hoover

Faculty: Tiffany Beason, Ph.D. Jill Bohnenkamp, Ph.D., Elizabeth Connors, Ph.D, Britt Patterson, Ph.D., Kris Scardamalia, Ph.D., Cindy Schaeffer, Ph.D.



Central East (HHS Region 3)

MHTTC

Mental Health Technology Transfer Center Network

Funded by Substance Abuse and Mental Health Services Administration



UNIVERSITY of MARYLAND
SCHOOL OF MEDICINE



School Mental Health Webinar Series

Objectives

- Gain increased awareness of high quality, sustainable multi-tiered system of school mental health supports and services
- Support trauma-informed systems in schools
- Discover the impacts of social determinants of health on student academic and social-emotional-behavioral success
- Learn to provide more culturally responsive and equitable services and supports
- Hear perspectives on school mental health from school, district and state levels
- Obtain insight into how youth, families, schools and communities can best work together to address student mental health needs



Central East (HHS Region 3)

MHTTC

Mental Health Technology Transfer Center Network

Funded by Substance Abuse and Mental Health Services Administration



UNIVERSITY of MARYLAND
SCHOOL OF MEDICINE



Upcoming Webinars

Monday, August 10th 11-12:30p ET

- What Can Schools Do to Address Inequities, Racism, and Social Injustices

More to be Scheduled September –June

1st Wednesdays of the Month, 3:00-4:00 ET



UNIVERSITY of MARYLAND
SCHOOL OF MEDICINE



S H  P E

School Health Assessment
and Performance Evaluation System



Comprehensive school mental health includes

A full array of supports and services promoting:

- positive school climate
- social emotional learning
- mental health & well-being
- healthy social environments
- cultural responsiveness & equity





Partnership and Teamwork

Built on a strong foundation of district and school professionals, in strategic partnership with students, families, and community health and mental health partners





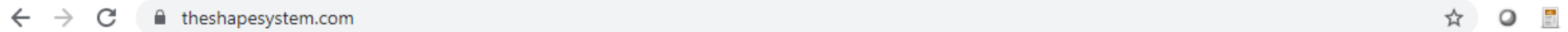
S H  P E

School Health Assessment
and Performance Evaluation System

Demonstration



The SHAPE System



[Home](#) [About Us](#) [Sign up](#) [Log in](#)

What is **SHAPE?**



A **free**, interactive tool designed to improve accountability, excellence, and sustainability in school mental health in schools, districts, and states.

[Learn More](#)





Homepage

Improve student mental health in your schools, districts, and states. Sign up for:

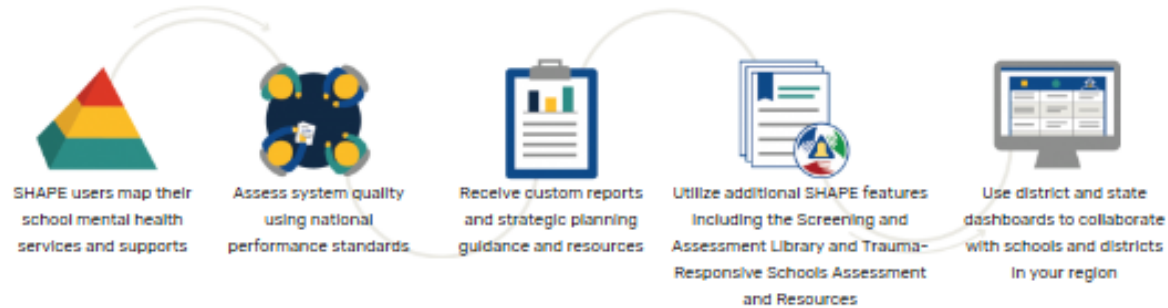
Myself

My School

My District

My State

SHAPE helps schools and districts improve their school mental health systems! HOW?



SHAPE Features

- School & District Profiles
- Quality Assessment & Resources
- State and District Dashboard
- Screening & Assessment Library
- Trauma Responsive Schools Assessment



Collects information and provides a snapshot of the multi-tiered services and supports, staffing, financing and data systems of school and district comprehensive school mental health systems.

Printable school version

Printable district version



Sign Up



What is **SHAPE?**

A **free**, interactive tool designed to improve accountability, excellence, and sustainability in school mental health in schools, districts, and states.

[Learn More](#)





Create a SHAPE account.

Welcome to SHAPE!

You're on your way to opening a SHAPE account and gaining access to an array of tools and resources to advance school mental health.

First, we need some basic information to set up your account.

Already have an account? [Log in.](#)

First Name *

Last Name *

Email *

Role/Position

State *

Continue



Welcome to SHAPE!

You're on your way to opening a SHAPE account and gaining access to an array of tools and resources to advance school mental health.

First, we need some basic information to set up your account.

Already have an account? [Log in.](#)

First Name *

John

Last Name *

Snow

Email *

kingofthenorth@GOT|edu

Role/Position

State *

Maryland

At what level are you registering for SHAPE? *

- INDIVIDUAL** [Learn more ?](#)
- SCHOOL** [Learn more ?](#)
- DISTRICT** [Learn more ?](#)
- STATE** [Learn more ?](#)

Continue





Account Types

School Health Assessment

SHAPE Account - District

What are the benefits of signing up for my school district?
When you sign up for your school district in the SHAPE System, you'll:

- Gain access to and be able to complete the School Mental Health Quality Assessment to better understand school mental health quality in your school
- Access free, targeted resources to help advance your school mental health quality and sustainability
- Advance a data-driven mental health team process for your district
- Have your district counted in the National School Mental Health Census
- Achieve SHAPE recognition to increase opportunities for federal, state, and local grant funding

Last Name *
Snow

Email *
johnsnow@schooldistrict.com

Role/Position

State *
Maryland

At what level are you registering for SHAPE? *

INDIVIDUAL [Learn more](#)

SCHOOL [Learn more](#)

DISTRICT [Learn more](#)

STATE [Learn more](#)

Are you employed by the school? *

Yes

No

District
-- Choose district --

School
Please select a district

Is your school or district missing? [Click here](#)

Continue



At what level are you registering for SHAPE? *

- INDIVIDUAL** Learn more ?
- SCHOOL** Learn more ?
- DISTRICT** Learn more ?
- STATE** Learn more ?

Are you most familiar with a school or a district?

- SCHOOL**
- DISTRICT**



District

School

Is your school or district missing? [Click here](#)

Continue

At what level are you registering for SHAPE? *

- INDIVIDUAL** Learn more ?
- SCHOOL** Learn more ?
- DISTRICT** Learn more ?
- STATE** Learn more ?

Are you employed by the district (local education authority)? *

- Yes**
- No**



District

Is your school or district missing? [Click here](#)

Continue



Complete Registration

SHAPE Registration

We want to understand your perspective on school mental health in the school or district that you are most familiar with. Please answer these questions to the best of your knowledge. If you do not know the answer to a question, select "not sure."

Does your school mental health system have universal mental health screening and assessment?	Yes	No	Not sure
Does your school mental health system include universal mental health promotion services and supports at the school or grade level (Tier 1)?	Yes	No	Not sure
Does your school mental health system include selective services and prevention supports to students identified as being at risk for mental health concerns (Tier 2)?	Yes	No	Not sure
Does your school mental health system include indicated, individualized services and supports for students identified with mental health concerns (Tier 3)?	Yes	No	Not sure
Does your school mental health system include evidence-based practices and programs (as identified in the national evidence-based registries)?	Yes	No	Not sure
Does your school mental health system include community partnerships to augment school mental health services and supports provided by the school system?	Yes	No	Not sure
Does your school mental health system use a quality improvement process to understand and improve the comprehensive school mental health system?	Yes	No	Not sure

Registration ✕

Success!

You are now a SHAPE District Team Administrator.

You now have access to:

- Invite team members to join your district
- Complete the School Mental Health Quality Assessment to better understand school mental health quality in your district.
- Free, targeted resources to help advance your school mental health quality and sustainability.
- Have your district counted in the National School Mental Health Census
- Achieve SHAPE recognition to increase opportunities for federal, state, and local grant funding.



Create a Password

Account Activation

Welcome, John Snow!

Create a password for your account with username
kingofthenorth@GOT.edu

Create Password

Confirm Password

I accept the privacy policy and terms of use.

Activate



[Privacy Policy](#) [Terms of Use](#)



Overview Page

- Overview
- School Mental Health Profile
- Mental Health Quality
- Resources
- Screening & Assessment
- Trauma Responsiveness
- My Schools
- My District Account

JEFFERSON UNITED

My Star Status

View Certificate



Welcome to SHAPE! Explore all that SHAPE has to offer to improve your district's school mental health system.



School Mental Health Profile

Teams are encouraged to start with The School Mental Health Profile, which asks about the structure and operations of your school mental health system. This Profile is part of the National School Mental Health Census, an effort to capture the status of school mental health nationally.



Quality Assessment

The Quality Assessment will help your team assess the quality of your school mental health system based on seven domains. Teams receive a custom report based on responses.



Resource Center

The Resource Center includes publicly available resources selected by school mental health experts. The library is divided by key components of a comprehensive school mental health system. Teams are encouraged to use custom reports from the Quality Assessment to navigate the resource library and guide the selection of appropriate resources.



Screening and Assessment Library

The Screening and Assessment Library offers an extensive list of free and low-cost measures related to school mental health.



Trauma Responsiveness

The Trauma Responsive Schools Implementation Assessment (TRS-IA) is an evidence-informed self-assessment. Feedback reports and comprehensive guides will be generated to support schools and districts as they work to enhance their trauma-responsive programming.



My Schools

View data related to school mental health from schools in your district in the My Schools tab.



School Mental Health Profile



- Overview
- School Mental Health Profile**
- Mental Health Quality
- Resources
- Screening & Assessment
- Trauma Responsiveness
- My Schools
- My District Account

JEFFERSON UNITED



My Star Status

View Certificate



The School Mental Health Profile

collects information related to multi-tiered services and supports, staffing, financing, and data systems based on your district's school mental health system. Your responses will contribute to the National School Mental Health Census, an effort to capture the status of school mental health nationally.

[Instructions](#) [Printable Version](#) [Sample Report](#)

My Progress



Summary Report

Last updated on: 11/01/2019

Students Served and Data Systems



[Take Survey](#) [View Responses](#)

Last updated on: 11/06/2019

Staffing



[Take Survey](#) [View Responses](#)

Last updated on: 11/06/2019

Services and Supports



[Take Survey](#) [View Responses](#)



School Mental Health Profile



Mental Health Profile

Students Served and Data Systems

The School Mental Health Profile documents the structure and operations of your school mental health system. This Profile is part of the National School Mental Health Census, an effort to capture the status of school mental health nationally.

Instructions: Complete this assessment with an existing team or identify a new team. Broad and diverse participation ensures meaningful assessment, successful planning, and implementation. Your team may include school- or community-employed staff and other partners and stakeholders, including youth and families. Please respond to these questions based on the past school year.

We anticipate most districts will have schools with a range of progress in school mental health, a variety of data collection and reporting strategies, and other characteristics queried on this profile. However, we ask that you do your best to respond on behalf of your whole district based on the data you have access to and can estimate.

What if we have difficulty answering a question? If you don't have the data to report, you can skip the question. Also, many teams need to leave some questions blank and come back to them later (you can still proceed and return to update this profile at any time). Further, no team can tackle all parts of their school mental health system at once or in a given school year. This assessment should be used as a quality improvement tool to facilitate structured conversations, strategic planning, metric for team reassessment, and to optimize the quality of all aspects of your school mental health system over time.

[Download a printable version of the School Mental Health Profile for Districts](#)

Next

School Mental Health Profile

Students Served and Data Systems

To the best of your knowledge, are the following school mental health services and supports in place in your school? See notes below for further explanation.

Services and Supports	Not in place	Available in 1-25% of schools	Available in 26-50% of schools	Available in 51-75% of schools	Available in 76-100% of schools
Mental health screening [?]	Not in place	Available in 1-25% of schools	Available in 26-50% of schools	Available in 51-75% of schools	Available in 76-100% of schools
Tier 1 services and supports [?]	Not in place	Available in 1-25% of schools	Available in 26-50% of schools	Available in 51-75% of schools	Available in 76-100% of schools
Tier 2 services and supports [?]	Not in place	Available in 1-25% of schools	Available in 26-50% of schools	Available in 51-75% of schools	Available in 76-100% of schools
Tier 3 services and supports [?]	Not in place	Available in 1-25% of schools	Available in 26-50% of schools	Available in 51-75% of schools	Available in 76-100% of schools
Evidence-based practices and programs (as identified in national evidence-based registries)	Not in place	Available in 1-25% of schools	Available in 26-50% of schools	Available in 51-75% of schools	Available in 76-100% of schools
Community partnerships to augment school mental health services and supports provided by the school system	Not in place	Available in 1-25% of schools	Available in 26-50% of schools	Available in 51-75% of schools	Available in 76-100% of schools
Quality improvement process to understand and improve the comprehensive school mental health system	Not in place	Available in 1-25% of schools	Available in 26-50% of schools	Available in 51-75% of schools	Available in 76-100% of schools



School Mental Health Profile



Overview | **School Mental Health Profile** | Mental Health Quality | Resources | Screening & Assessment | Trauma Responsiveness | My Schools | My District Account

JEFFERSON UNITED

My Star Status
 View Certificate

The School Mental Health Profile

collects information related to multi-tiered services and supports, staffing, financing, and data systems based on your district's school mental health system. Your responses will contribute to the National School Mental Health Census, an effort to capture the status of school mental health nationally.

[Instructions](#) [Printable Version](#) [Summary Report](#)



Summary Report

Last updated on: 11/01/2019

Students Served and Data Systems

Take Survey | View Responses

Last updated on: 11/06/2019

Staffing

Take Survey | View Responses

Last updated on: 11/06/2019

Services and Supports

Take Survey | View Responses

Indicate which of the following data points your District collected last year and how those data were used. (SMH = school mental health)

Data point	Did you collect it last year?		How was it used? (select all that apply)				
	Yes	No	Identify students for mental health risk	Match/triage students to SMH service delivery	Track individual student progress in SMH interventions	Monitor/ evaluate SMH system outcomes	Was collected but not used for SMH services last year
Attendance/ Chronic Absences							
Academic Achievement (Grades, standardized testing)							
Office discipline referrals							
Out of school suspensions							
School climate/safety							
Other (please describe):____							
Other (please describe):____							

Does your district have an electronic data system to identify the number of students receiving mental health early intervention (Tier 2) and/or treatment (Tier 3) services and supports? (yes /no)

If yes, please describe the system your district used. _____



Reports

Download as PDF



School District Mental Health Profile
JEFFERSON UNITED

Last Updated: October 3rd, 2019

Understanding this Summary

This report is generated based on the information you provided for your School District Mental Health Profile.

This profile provides a snapshot of the structure and operations of your school district's comprehensive school mental health system.

Number of schools in your district:

10

Number of students in grades K-12:

10,000

About Your School District Mental Health Report

Congratulations! Your district's team has been counted in the National School Mental Health Census and achieved Bronze SHAPE recognition for completing the School Mental Health Profile. Complete the National School Mental Health Performance Measures on SHAPE (the Quality Assessments) to achieve Silver and Gold SHAPE Recognition.

Schools and districts who register with SHAPE aspire toward having strong school-community-family partnerships that provide a multi-tiered continuum of evidence-based mental health services to support students, families, and the school community.



Students Served and Data Systems
JEFFERSON UNITED

Last Updated: October 3rd, 2019

Services and Supports	Availability				
	Not in place	1-25% of schools	26-50% of schools	51-75% of schools	76-100% of schools
Mental health screening	✓				
Tier 1 services and supports					✓
Tier 2 services and supports		✓			
Tier 3 services and supports			✓		
Evidence-based practices and programs			✓		
Community partnerships		✓			





State School Mental Health Profile

The State Mental Health Profile
will help your state assess several school mental health indicators including: infrastructure, technical assistance and training, state policies, financing, staffing, and emerging SMH issues (including SEL, telepsychiatry, SDH).
The state profile will take approximately 1-2 hours to complete as a team.

[Instructions](#) [Printable Version](#)

State Agencies & Organizations

[Take Survey](#) [View Responses](#)

State Level Leadership

[Take Survey](#) [View Responses](#)

Policy

[Take Survey](#) [View Responses](#)

Funding

[Take Survey](#) [View Responses](#)

Services and Supports

[Take Survey](#) [View Responses](#)

Innovations and Emerging Areas

[Take Survey](#) [View Responses](#)

Staffing and Community Partnered Behavioral Health

[Take Survey](#) [View Responses](#)

Barriers and Resources

[Take Survey](#) [View Responses](#)

State Agencies and Organizations					
Please select all organizations actively involved in the advancement of comprehensive school mental health services and supports in your state. Involvement could include leadership, technical assistance and training, funding, advocacy and policy, and service provision.					
	Leadership/ Oversight ?	Technical Assistance & Training ?	Funding ?	Advocacy & Policy ?	Service Provision (promotion, prevention, intervention) ?
Education (e.g., state and local education agencies, school board, individual schools)	<input type="checkbox"/>	<input type="checkbox"/>	<input type="checkbox"/>	<input type="checkbox"/>	<input type="checkbox"/>
Early childhood (e.g., Head Start, day care, pre-K)	<input type="checkbox"/>	<input type="checkbox"/>	<input type="checkbox"/>	<input type="checkbox"/>	<input type="checkbox"/>
Physical health (e.g., community health centers, hospital services for children and adolescents, HMOs, state and local health departments)	<input type="checkbox"/>	<input type="checkbox"/>	<input type="checkbox"/>	<input type="checkbox"/>	<input type="checkbox"/>
Public health (e.g., state and local public health departments, organizations, and programs)	<input type="checkbox"/>	<input type="checkbox"/>	<input type="checkbox"/>	<input type="checkbox"/>	<input type="checkbox"/>
Behavioral health (integrated mental health and substance use; e.g., state and local behavioral health agencies, organizations and programs)	<input type="checkbox"/>	<input type="checkbox"/>	<input type="checkbox"/>	<input type="checkbox"/>	<input type="checkbox"/>



The State Mental Health Profile
will help your state assess several school mental health indicators including: infrastructure, technical assistance and training, state policies, financing, staffing, and emerging SMH issues (including SEL, telepsychiatry, SDH).
The state profile will take approximately 1-2 hours to complete as a team.

[Instructions](#) [Printable Version](#)



State Agencies & Organizations

[Take Survey](#) [View Responses](#)

State Level Leadership

[Take Survey](#) [View Responses](#)

Policy

[Take Survey](#) [View Responses](#)

Funding

[Take Survey](#) [View Responses](#)

Services and Supports

[Take Survey](#) [View Responses](#)

Innovations and Emerging Areas

[Take Survey](#) [View Responses](#)

Staffing and Community Partnered Behavioral Health

[Take Survey](#) [View Responses](#)

Barriers and Resources

[Take Survey](#) [View Responses](#)

II. STATE-LEVEL LEADERSHIP

Is there at least one state work group, mental health advisory, committee, or community of practice that guides policies and planning for school mental health in your state?

- YES
- NO

What is/are the name(s) of the group(s) that provide this guidance?

Is there a state-level school mental health director or coordinator?

- YES
- NO

Please provide his/her name, title, organization/affiliation and email.



Quality Assessment

JEFFERSON UNITED

My Star Status

[View Certificate](#)

The School Mental Health Quality Assessment
is designed for teams to assess the comprehensiveness of their school mental health system and to identify priority areas for improvement. The Quality Assessment is comprised of seven domains (Teaming, Needs Assessment/Resource Mapping, Screening, Mental Health Promotion Services & Supports, Early Intervention and Treatment, Funding and Sustainability, Impact). Your team will receive custom reports as you complete each domain.

[Instructions](#) [Printable Version](#) [Sample Reports](#)

My Progress

Current Reporting Period: September 2018 - June 2019
[Change Reporting Period](#)

[Summary Report](#)

<p>Last completed on: 09/18/2019 Completed by 2 people.</p> <p>Teaming</p> <p>Take Survey View Report</p>	<p>Last completed on: 09/27/2019 Completed by 1 person.</p> <p>Needs Assessment/Resource Mapping</p> <p>Take Survey View Report</p>	<p>Last completed on: 10/15/2019 Completed by 3 people.</p> <p>Screening</p> <p>Take Survey View Report</p>	<p>Last completed on: 09/27/2019 Completed by 1 person.</p> <p>Mental Health Promotion Services & Supports</p> <p>Take Survey View Report</p>
--	--	--	--

<p>Last completed on: 09/27/2019 Completed by 1 person.</p> <p>Early Intervention and Treatment Services & Supports</p> <p>Take Survey View Report</p>	<p>Last completed on: 09/27/2019 Completed by 1 person.</p> <p>Funding and Sustainability</p> <p>Take Survey View Report</p>	<p>Last completed on: 09/27/2019 Completed by 1 person.</p> <p>Impact</p> <p>Take Survey View Report</p>
---	---	---



Introduction Slide

Reporting period: 01/2019 - 12/2019

Teaming

School districts are in the position of ensuring that school mental health efforts are appropriately staffed and supported by multidisciplinary teams that have effective communication and collaboration practices. Many schools have teams that meet to discuss and strategize about student mental health issues. Schools may have one team devoted to the full continuum of mental health supports (mental health promotion to early intervention and treatment) or they may have multiple teams that address different parts of the continuum (e.g., school climate team, student support team, Individualized Education Program team, intervention/tertiary care team, Tier 2/3 team, any other team that addresses student mental health concerns).

The following questions relate to the district's perception of mental health staffing and team(s) in their schools. The last four questions ask about the extent to which your district supports the implementation of teaming in your schools.

[Next](#)





Questions and Best Practices

Teaming



To what extent did schools in your district use best practices to meaningfully involve students and families to plan and improve the school mental health system? *

Never

Rarely

Sometimes

Often

Almost always

Always

Best practices:

- Involve students and families in all aspects of prevention, intervention, and health promotion design, implementation and evaluation; students and families can provide insight on school strengths and areas of need, program selection, implementation considerations, and ongoing quality assessment and progress monitoring
- Involve multiple students and families on teams; provide guidance and foundational information prior to each meeting so that they can have a meaningful role
- Gather additional information from students and families using surveys, interviews, and focus groups
- Identify existing youth and family mental health advocacy and navigation organizations in your community
- Partner with youth and family organizations to bring knowledge and passion based on practical, real-life experiences and expertise to support providers and other students and families within the system

Prev

Next



Domain Reports

[Download as PDF](#)

Teaming

Reporting Period: September 2018 - June 2019
Date of Report: 10/07/2019
Entered By: 2 Users

About Teaming

School districts are in the position of ensuring that school mental health efforts are appropriately staffed and supported by multidisciplinary teams that have effective communication and collaboration practices. Many schools have teams that meet to discuss and strategize about student mental health issues. Schools may have one team devoted to the full continuum of mental health supports (mental health promotion to early intervention and treatment) or they may have multiple teams that address different parts of the continuum (e.g., school climate team, student support team, Individualized Education Program team, intervention/tertiary care team, Tier 2/3 team, any other team that addresses student mental health concerns).

Need resources? The SHAPE Resource Library offers a wide variety of tools and resources to help your team improve your school mental health system. The library is organized by Quality Domain to help you locate exactly what you need.

For example, to find resources related to forming a multidisciplinary team or partnerships with the community and youth and families, select "Teaming" in the resource library and filter by "Partners."

The district team who completed this assessment reported the following information about the quality of teaming in your schools:

Teaming

Reporting Period: September 2018 - June 2019
Date of Report: 10/07/2019
Entered By: 2 Users

For schools in your district
OVERALL COMPOSITE SCORE: 3.3

Partners

3	Multidisciplinary teams
3	Youth and family partnership
3	Community partnerships

Structure/Process

3	Addresses all tiers
2	Avoid duplication and promote efficiency
5	Best practices for meetings
4	Delineated roles/responsibilities
3	Effective referral processes

Data

2	Data based decisions for interventions
2	Data sharing

District support
OVERALL COMPOSITE SCORE: 1.9

District Support

1	Establish and disseminate written, standard policies and procedures
2	Support implementation
1	Monitor implementation
2	Supports





Strategic Planning Guide



Strategic Planning Guide

The following pages can be used as tool to plan your next steps for this domain. We encourage you to complete this with your team.

Please state a specific goal within this domain. (For example, for the Teaming domain, one goal might be that the school mental health team will better collect and use data to identify students who need mental health support.)

GOAL: _____

How will you know if you've achieved success within this goal? (For example, for the Teaming domain and your goal is to better collect and use data to identify students who need mental health support, one way of measuring success might be that by the next academic school year, the school mental health team will review student mental health screening data for the entire student body twice per year to identify students in need of services and make a plan for meeting those needs.)

INDICATOR OF SUCCESS: _____

What opportunities exist related to this goal?

- What have been our past successes?

- What current work is taking place related to this goal?

- What are our available resources (leadership, infrastructure, staffing, partnerships)?

What barriers exist related to this goal?

- What would prevent us from moving forward with this goal?

- What would we need to overcome this/these barrier(s)?



Monitor Progress

JEFFERSON UNITED

My Star Status

[View Certificate](#)

The School Mental Health Quality Assessment
is designed for teams to assess the comprehensiveness of their school mental health system and to identify priority areas for improvement. The Quality Assessment is comprised of seven domains (Teaming, Needs Assessment/Resource Mapping, Screening, Mental Health Promotion Services & Supports, Early Intervention and Treatment, Funding and Sustainability, Impact). Your team will receive custom reports as you complete each domain.

[Instructions](#) [Printable Version](#) [Sample Reports](#)

Current Reporting Period: September 2018 - June 2019
[Change Reporting Period](#)

[Summary Report](#)

<p>Last completed on: 09/18/2019 Completed by 2 people.</p> <p>Teaming</p> <p>Take Survey View Report</p>	<p>Last completed on: 09/27/2019 Completed by 1 person.</p> <p>Needs Assessment/Resource Mapping</p> <p>Take Survey View Report</p>	<p>Last completed on: 10/15/2019 Completed by 3 people.</p> <p>Screening</p> <p>Take Survey View Report</p>	<p>Last completed on: 09/27/2019 Completed by 1 person.</p> <p>Mental Health Promotion Services & Supports</p> <p>Take Survey View Report</p>
--	--	--	--

<p>Last completed on: 09/27/2019 Completed by 1 person.</p> <p>Early Intervention and Treatment Services & Supports</p> <p>Take Survey View Report</p>	<p>Last completed on: 09/27/2019 Completed by 1 person.</p> <p>Funding and Sustainability</p> <p>Take Survey View Report</p>	<p>Last completed on: 09/27/2019 Completed by 1 person.</p> <p>Impact</p> <p>Take Survey View Report</p>
---	---	---



Quality Assessment Summary Report

JEFFERSON UNITED

My Star Status

[View Certificate](#)

The School Mental Health Quality Assessment
is designed for teams to assess the comprehensiveness of their school mental health system and to identify priority areas for improvement. The Quality Assessment is comprised of seven domains (Teaming, Needs Assessment/Resource Mapping, Screening, Mental Health Promotion, Early Intervention and Treatment, Funding and Sustainability, Impact). Your team will receive custom reports as you complete each domain.

[Instructions](#) [Printable Version](#) [Sample Reports](#)

Current Reporting Period: September 2018 - June 2019
[Change Reporting Period](#)



[Summary Report](#)

<p>Last completed on: 09/16/2019 Completed by 2 people.</p> <p>Teaming</p> <p>Take Survey View Report</p>	<p>Last completed on: 09/27/2019 Completed by 1 person.</p> <p>Needs Assessment/Resource Mapping</p> <p>Take Survey View Report</p>	<p>Last completed on: 10/15/2019 Completed by 3 people.</p> <p>Screening</p> <p>Take Survey View Report</p>	<p>Last completed on: 09/27/2019 Completed by 1 person.</p> <p>Mental Health Promotion Services & Supports</p> <p>Take Survey View Report</p>
<p>Last completed on: 09/27/2019 Completed by 1 person.</p> <p>Early Intervention and Treatment Services & Supports</p> <p>Take Survey View Report</p>	<p>Last completed on: 09/27/2019 Completed by 1 person.</p> <p>Funding and Sustainability</p> <p>Take Survey View Report</p>	<p>Last completed on: 09/27/2019 Completed by 1 person.</p> <p>Impact</p> <p>Take Survey View Report</p>	



Summary Report and Strategic Planning Guide

Download as PDF

School Mental Health Quality Progress Report
Seven Kingdoms High School

Reporting Period: September 2018 - June 2019
Date of Report: 10/09/2019
Entered By: 1 User

Understanding this Summary

This report is generated based on the information you provided for the trauma survey. The composite score for each domain is the average of your ratings for every item within the domain.

Composite scores of 1.0-2.9 are classified as "Emerging" areas, 3.0-4.9 are classified as "Progressing" areas, and 5.0-6.0 are classified as areas of "Mastery."

MENTAL HEALTH QUALITY DOMAINS

MASTERY
Composite Score

PROGRESSING
Composite Score

- 4.7 Teaming
- 4.0 Mental Health Promotion Services & Supports
- 4.2 Early Intervention and Treatment Services & Supports
- 4.4 Funding and Sustainability

EMERGING
Composite Score

- 2.7 Needs Assessment/ Resource Mapping
- 2.3 Impact

OTHER PERFORMANCE DOMAINS

Overall Score

50% Screening

** indicates data were not reported*

This progress report was developed by the Center for School Mental Health for The SHAPE System.
Page 1 of 13

Strategic Planning Guide

Thank you for completing the School Mental Health Quality Assessment. We encourage you to meet with your school mental health team, review your scores on each performance domain provided in this report, and engage in a strategic planning process to improve your school mental health.

Mental Health Quality Guides are available in the Resource Center for each performance domain with action steps and resources to guide improvement. Consider using these materials and this Strategic Planning Guide to create a strategic plan for improving your team's performance in one or more areas.

List the domain(s) on which you scored the lowest (Emerging and Progressing) and evaluate your system's capacity and motivation to implement change in each domain.

Domain	Need for change (1-10) 1=no need 10=great need	Desire for change (1-10) 1=no desire 10=great desire	Resources to achieve change (1-10) 1=no resources 10=many resources	Barriers to change (1-10) 1=no barriers 10=many barriers
1.				
2.				
3.				

Select one domain from the list above that your team wants to improve.

DOMAIN: _____


This progress report was developed by the Center for School Mental Health for The SHAPE System.
Page 9 of 13



Customize Reports

Start Date: 09/2018 End Date: 06/2019 Domain: 7 Domains Entered By: 4 Users Report Type: Average [Generate Report](#)

[Download as PDF](#)



School Mental Health
JEFFERSON UNITED

Understanding this Summary

This report is generated based on the information you provided for the trauma survey. The composite score for each domain is the average of your ratings for every item within the domain.

Composite scores of 1.0-2.9 are classified as "Emerging" areas, 3.0-4.9 are classified as "Progressing" areas, and 5.0-6.0 are classified as areas of "Mastery."

MENTAL HEALTH QUALITY DOMAINS

MASTERY
Composite Score

PROGRESSING
Composite Score

- 3.3 Teaming
- 3.9 Needs Assessment/ Resource Mapping
- 3.6 Funding and Sustainability
- 4.3 Needs Assessment/ Resource Mapping District Support
- 3.8 Funding and Sustainability District Support
- 3.0 Impact District Support

EMERGING
Composite Score

- 2.6 Mental Health Promotion Services & Supports
- 2.8 Early Intervention and Treatment Services & Supports
- 2.5 Impact
- 1.9 Teaming District Support
- 2.5 Mental Health Promotion Services & Supports District Support
- 2.3 Early Intervention and Treatment Services & Supports District Support
- 2.0 Impact District-Level Documenting and Reporting

OTHER PERFORMANCE DOMAINS
Overall Score

- 50% Screening
- 4.9 Screening District Support

18 - June 2019
ort: 10/07/2019
ed By: 4 Users

- All Users
- All Admins
- Elizabeth Connors
- Jill Bohnenkamp
- Samantha Reaves
- Lauren Harris



Star Recognition

Download as PDF



BRONZE LEVEL SHAPE RECOGNITION

BENTLEY

has hereby completed the School Mental Health Profile and has been counted in the National School Mental Health Census.

Presented by: The National Center for School Mental Health
On this day: Wednesday, November 20th, 2019



Download as PDF



SILVER LEVEL SHAPE RECOGNITION

ESSEX AGRICULTURAL AND TECHNICAL INSTITUTE

has hereby completed the School Mental Health Profile and at least one domain of the School Mental Health Quality Assessment.

Presented by: The National Center for School Mental Health
On this day: Wednesday, November 20th, 2019



Download as PDF



GOLD LEVEL SHAPE RECOGNITION

JEFFERSON UNITED

has hereby completed the School Mental Health Profile and all domains of the School Mental Health Quality Assessment.

Presented by: The National Center for School Mental Health
On this day: Wednesday, November 20th, 2019





Resource Library

[Overview](#)
[School Mental Health Profile](#)
[Mental Health Quality](#)
[Resources](#)
[Screening & Assessment](#)
[Trauma Responsiveness](#)
[My Schools](#)
[My District Account](#)

The **Resource Center** houses publicly available resources representing key components of comprehensive school mental health. Teams are encouraged to use custom reports from the Quality Assessment to navigate the Resource Center and guide the selection of appropriate resources.

[Mental Health Quality](#)
[Trauma Responsiveness](#)

Filter by Criteria

Teaming

- All Teaming Resources
- Partners
- Structure/Process

Needs Assessment/Resource Mapping

- All Needs Assessment/Resource Mapping Resources
- Needs Assessment
- Resource Mapping and Implementation
- Alignment

Screening

- All Screening Resources
- Collaboration



Showing 228 of 228 resources.

Per page: 25

A Blueprint for Using Data to Reduce Disparities/ Disproportionalities in Human Services and Behavioral Health Care

A Framework for Effectively Implementing Evidence-Based Programs and Practices (EBPs)



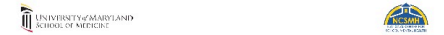
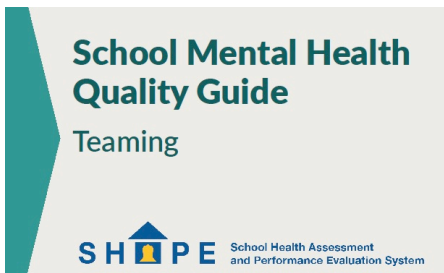
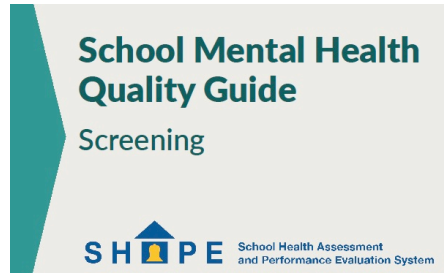
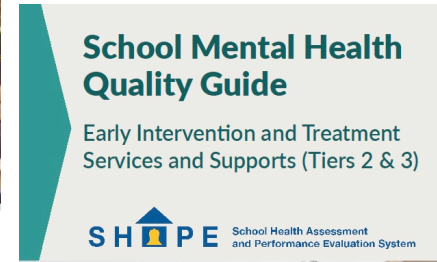
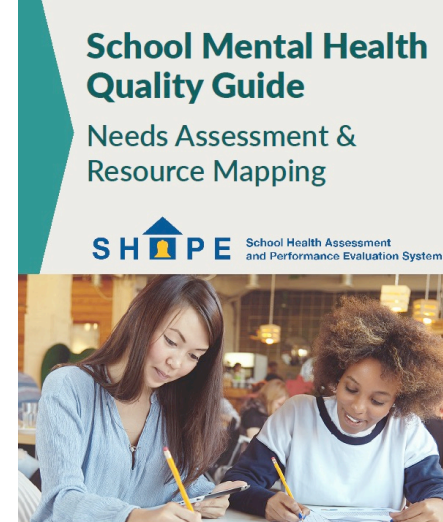
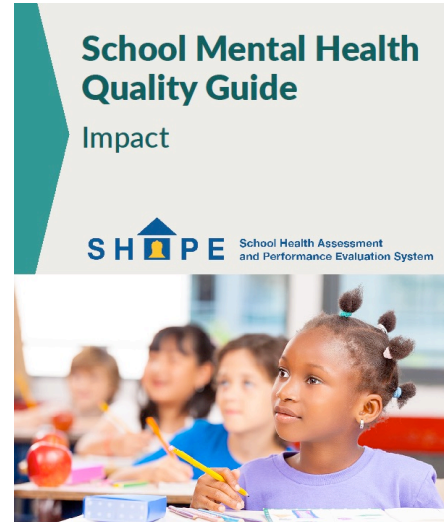
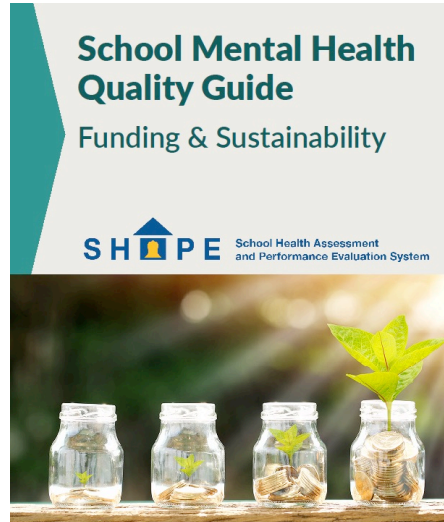
Quality Guides



Provides guidance to advance school mental health quality and sustainability

Includes:

- Background
- Best practices
- Action steps
- Examples from the field
- Resources





Screening and Assessment Library

- Overview
- School Mental Health Profile
- Mental Health Quality
- Resources
- ✓ Screening & Assessment
- + Trauma Responsiveness
- My Schools
- My District Account

The **Screening and Assessment Library** offers an extensive list of free and low-cost measures. Use the filters to locate an appropriate measure for your needs. Each measure includes an information sheet, scoring details, and access to the measure.

Filter by Criteria

Focus Area

- Academic
- School Climate
- Anxiety
- Autism
- Depression/Mood
- Disruptive Behavior
- Eating
- Global Functioning
- Hyperactivity
- Inattention
- Life Satisfaction/Quality
- Resilience
- Social Skills
- Substance Use
- Trauma

Assessment Purpose

- Screening/Initial Evaluation
- Diagnostic
- Progress Monitoring



Search

Showing 28 of 28 resources.

Per page: 25

PDF Autism Treatment Evaluation Checklist (ATEC)

PDF CAGE Screen

PDF Center for Epidemiological Studies Depression Scale for Children (CES-DC)



Trauma Responsiveness

Overview School Mental Health Profile Mental Health Quality Resources Screening & Assessment **Trauma Responsiveness** My Schools My District Account

JEFFERSON UNITED



My Star Status [View Certificate](#)

The Trauma Responsive Schools Implementation Assessment (TRS-IA)
is a quality improvement tool developed by the NCTSN Treatment and Services Adaptation Center for Resilience, Hope, and Wellness in Schools and the National Center for School Mental Health. The TRS-IA is an evidence-informed self-assessment that comprises the eight key domains listed below. Administration time is less than 20 minutes. Feedback reports and comprehensive guides will be generated to support schools and districts as they work to enhance their trauma-responsive programming.

My Progress

Current Reporting Period: **September 2018 - June 2019**
[Change Reporting Period](#)

[Summary Report](#)

<p>Whole School Safety Planning</p> <p>Take Survey View Report</p>	<p>Whole School Prevention Planning</p> <p>Take Survey View Report</p>	<p>Whole School Trauma Programming</p> <p>Take Survey View Report</p>	<p>Classroom Strategies</p> <p>Take Survey View Report</p>
---	---	--	---

<p>Prevention/ Early Intervention Trauma Programming</p> <p>Take Survey View Report</p>	<p>Targeted Trauma-Informed Programming</p> <p>Take Survey View Report</p>	<p>Staff Self Care</p> <p>Take Survey View Report</p>	<p>Family and Community Engagement</p> <p>Take Survey View Report</p>
--	---	--	--



Account Administration



[Overview](#)
[School Mental Health Profile](#)
[Mental Health Quality](#)
[Resources](#)
[Screening & Assessment](#)
[Trauma Responsiveness](#)
[My Schools](#)
[My District Account](#)

JEFFERSON UNITED

My Star Status

[View Certificate](#)

Pending Requests													
	Showing 0 of 0												
District Admins	<table border="1"> <thead> <tr> <th>Actions</th> <th>Name</th> <th>Email</th> <th>Title</th> <th>Role</th> <th>Date Requested</th> </tr> </thead> <tbody> <tr> <td colspan="6">No matching records found</td> </tr> </tbody> </table>	Actions	Name	Email	Title	Role	Date Requested	No matching records found					
Actions	Name	Email	Title	Role	Date Requested								
No matching records found													
District Team Members													
Permissions													



Account Administration

Overview School Mental Health Profile Mental Health Quality Resources Screening & Assessment Trauma Responsiveness My Schools **My District Account**

JEFFERSON UNITED

My Star Status
[View Certificate](#)



Pending Requests	My Data State Access
District Admins	<h2>My Group Access</h2> <p><input checked="" type="checkbox"/> Allow my district team to review my assessment responses (recommended). <i>This allows your responses to be included in an aggregated district report.</i></p>
District Team Members	
Permissions	



District Account: "My Schools"



Overview | School Mental Health Profile | Mental Health Quality | Resources | Screening & Assessment | Trauma Responsiveness | **My Schools** | My District Account

JEFFERSON UNITED

My Star Status [View Certificate](#)

Monitor progress and view SHAPE reports from schools in your district.



Showing 3 of 3

School	Shares Data with District	Star Status	Admins	Team Members	Mental Health Profile Report	Mental Health Quality Report	Trauma Responsiveness Report
HAMILTON HIGH	✓	Blue ★	3	0	View	View	View
LINCOLN ELEMENTARY	✓	Blue ★	4	0	View	View	View
WASHINGTON MIDDLE	✓	Blue ★	3	0	View	View	View



State Account: "My Districts"

[Overview](#)
[State Profile](#)
[Resource Center](#)
[Screening & Assessment](#)
[My Districts](#)
[My Schools](#)
[My State Account](#)

SMH-QA Statewide District Report ?

TRS-IA Statewide District Report ?



Monitor progress and view SHAPE reports from districts in your state.

Showing 415 of 415 1 2 3 4 5 6 7 8 9

District	Shares Data with State	Star Status	Admins	Team Members	Mental Health Profile Report	Mental Health Quality Report	Trauma Responsiveness Report
<input type="text"/>							
ABBY KELLEY FOSTER CHARTER PUBLIC (DISTRICT)	✓		0	0	View	View	View
ABINGTON	✓	Blue ★	1	0	View	View	View
ACADEMY OF THE PACIFIC RIM CHARTER PUBLIC (DISTRICT)	✓		0	0	View	View	View
ACTON	✓		0	0	View	View	View
ACTON-BOXBOROUGH	✓		0	0	View	View	View
ACUSHNET	✓		0	0	View	View	View
ADAMS-CESHIRE	✓		0	0	View	View	View
ADVANCED MATH AND SCIENCE ACADEMY CHARTER (DISTRICT)	✓	Blue ★	2	0	View	View	View





Questions?

Contact Us

Have a question or feedback? Would you like a demonstration? Use the dropdown menu to choose a topic and enter your question/comment in the text box.

Topic: Feedback about the site ▾


Name


Email*

Message

Contact Information

National Center for School Mental Health
University of Maryland School of Medicine
737 West Lombard Street, 4th Floor
Baltimore, MD 21201

 (410) 706-0980

 (410) 706-0984

 ncsmh@som.umaryland.edu

 [Follow @NCSMhtweets](#)

 [Like @CenterforSchoolMentalHealth](#)



Please Share Your Feedback!

Evaluation



Central East (HHS Region 3)

MHTTC

Mental Health Technology Transfer Center Network

Funded by Substance Abuse and Mental Health Services Administration



UNIVERSITY of MARYLAND
SCHOOL OF MEDICINE



Upcoming Webinars

Monday, August 10th 11-12:30p ET

- What Can Schools Do to Address Inequities, Racism, and Social Injustices

More to be Scheduled September –June

1st Wednesdays of the Month, 3:00-4:00 ET



UNIVERSITY *of* MARYLAND
SCHOOL OF MEDICINE



Thank you!