

To connect with the MHTTC in your region, visit our website!



Find Your Center

To jump to a specific center, click the center's name. To save a center as your default center, select the center by clicking the photo, then click the Save button at the bottom of the page.

Centers Across The Network



National American Indian and Alaska Native MHTTC
University of Iowa College of Public Health
145 N. Riverside Dr.
Iowa City, IA 52246
United States
319-335-5564
native@mhttcnetwork.org

National Hispanic and Latino MHTTC
Universidad Central del Caribe
Laurel, Av. Sta. Juanita
Bayamon, PR 00960
United States
787-785-5220
hispaniclatino@mhttcnetwork.org

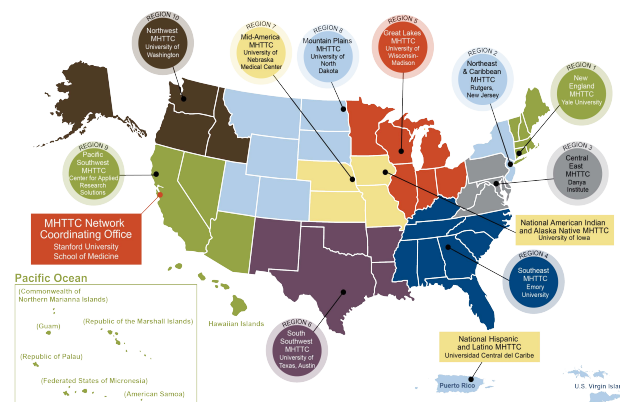
New England MHTTC
PRCH
319 Peck Street
New Haven, CT 06513
United States
617.467.6014
newengland@mhttcnetwork.org
States Served:
CT, ME, MA, NH, RI, VT

www.MHTTCnetwork.org



MHTTC

Mental Health Technology Transfer Center Network
Funded by Substance Abuse and Mental Health Services Administration



SCHOOL MENTAL HEALTH INITIATIVE

MENTAL HEALTH TECHNOLOGY TRANSFER CENTER (MHTTC) NETWORK

Questions?

Contact your Regional Center
or National Focus Area Center
www.MHTTCnetwork.org

or contact the MHTTC
Network Coordinating Office
Stanford University
School of Medicine

networkoffice@mhttcnetwork.org

www.MHTTCnetwork.org

SAMHSA

Substance Abuse and Mental Health
Services Administration



*The **purpose** of the MHTTC School Mental Health Initiative is to disseminate information and provide technical assistance and training on the implementation of mental health services in schools and school systems.*

Funded by the Substance Abuse and Mental Health Services Administration (SAMHSA), the MHTTC Network includes 10 Regional Centers, a National American Indian & Alaska Native Center, a National Hispanic & Latino Center, and a Network Coordinating Office.



Each Regional and National Focus Area Center provides activities and products customized to local needs. Check out the MHTTC website to learn more!

Visit our website to access our FREE school mental health resources and trainings!



**Product & Resources
Catalog**



**Training & Events
Calendar**

Populations served:

- State leaders from the Departments of Education and Mental Health
- Superintendents, principals, teachers and school staff
- Local and regional mental health service providers and program directors
- School safety and local law enforcement officers

Topic areas include:

- Assessment
- Cultural competence
- Evidence-based identification, early intervention, and treatment practices
- Mental health awareness
- Referral
- School wellness
- Trauma-informed practices in schools
- Youth suicide prevention