






## A Brief Overview

To improve the overall health and well-being of the communities we serve through high impact partnerships and high quality innovative programs.



- 
- ▶ Non-profit human services agency
  - ▶ Serving the community for over 125 years
  - ▶ Provide outpatient mental health, residential treatment, case management for underserved/low income individuals and families
  - ▶ Programming for individuals from birth through adulthood
  - ▶ Trauma-informed & evidence-based practices



# Providence Public School Department

COMMITMENT TO SOCIAL EMOTIONAL LEARNING



# PPSD - Educating a Diverse Population

- ▶ Serve approximately 24,000 students and their families among 41 schools
- ▶ 63% of students are Hispanic, 17% Black, 10% White, 5% Asian, 4% Multi-Racial, and 1% Native American
- ▶ 29% are English Language Learners (ELL) and 60% of students come from homes where English is not the primary language
- ▶ 15% of students receive special education
- ▶ Combined, students and families speak 55 different languages and hail from 91 countries of origin.



# Benefits of Social Emotional Learning

- ▶ Social and emotional learning is defined as the process of acquiring the skills to recognize and manage emotions, set and achieve positive goals, appreciate the perspectives of others, establish and maintain positive relationships, make responsible decisions, and handle interpersonal situations effectively.

Students exposed to SEL performed better than peers in several areas:

- ▶ Social behaviors and attitudes
- ▶ Empathy and teamwork skills
- ▶ Academics

And exhibited:

- ▶ Fewer conduct problems
- ▶ Less emotional distress
- ▶ Lower drug use

(SEL Research Group/ CASEL Update, 2011)

# A Partnership Developed: Why Us? Why Now?





# Implementing SEL within Providence Public Schools



A Collaborative Approach

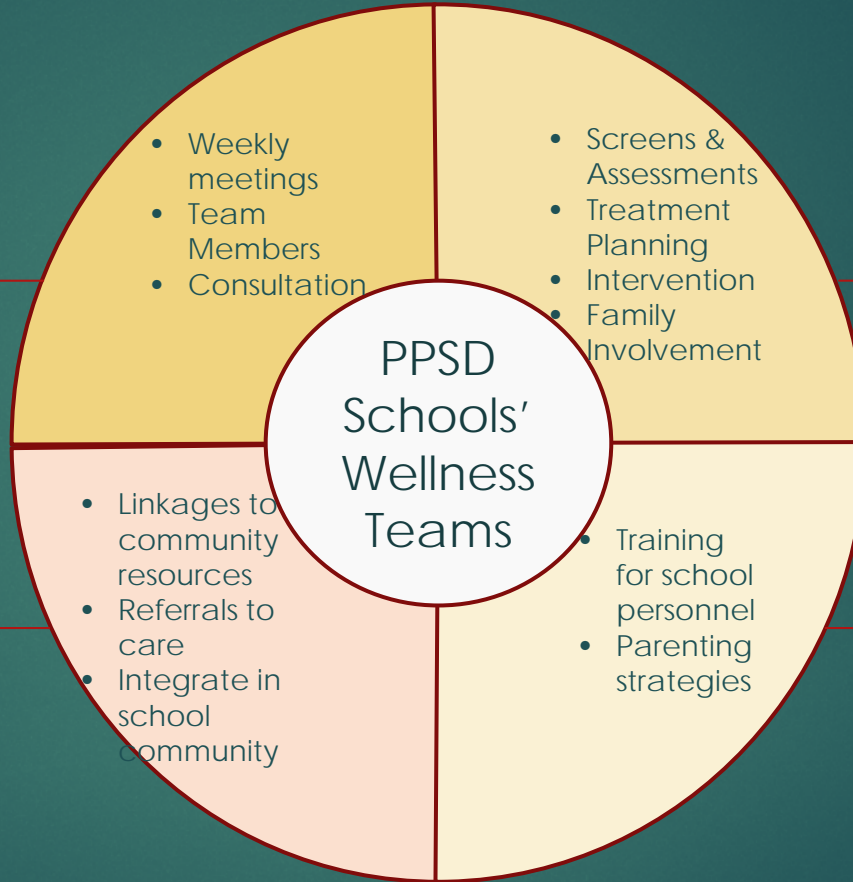


Collaboration

Clinical Care

Community

Sharing Expertise



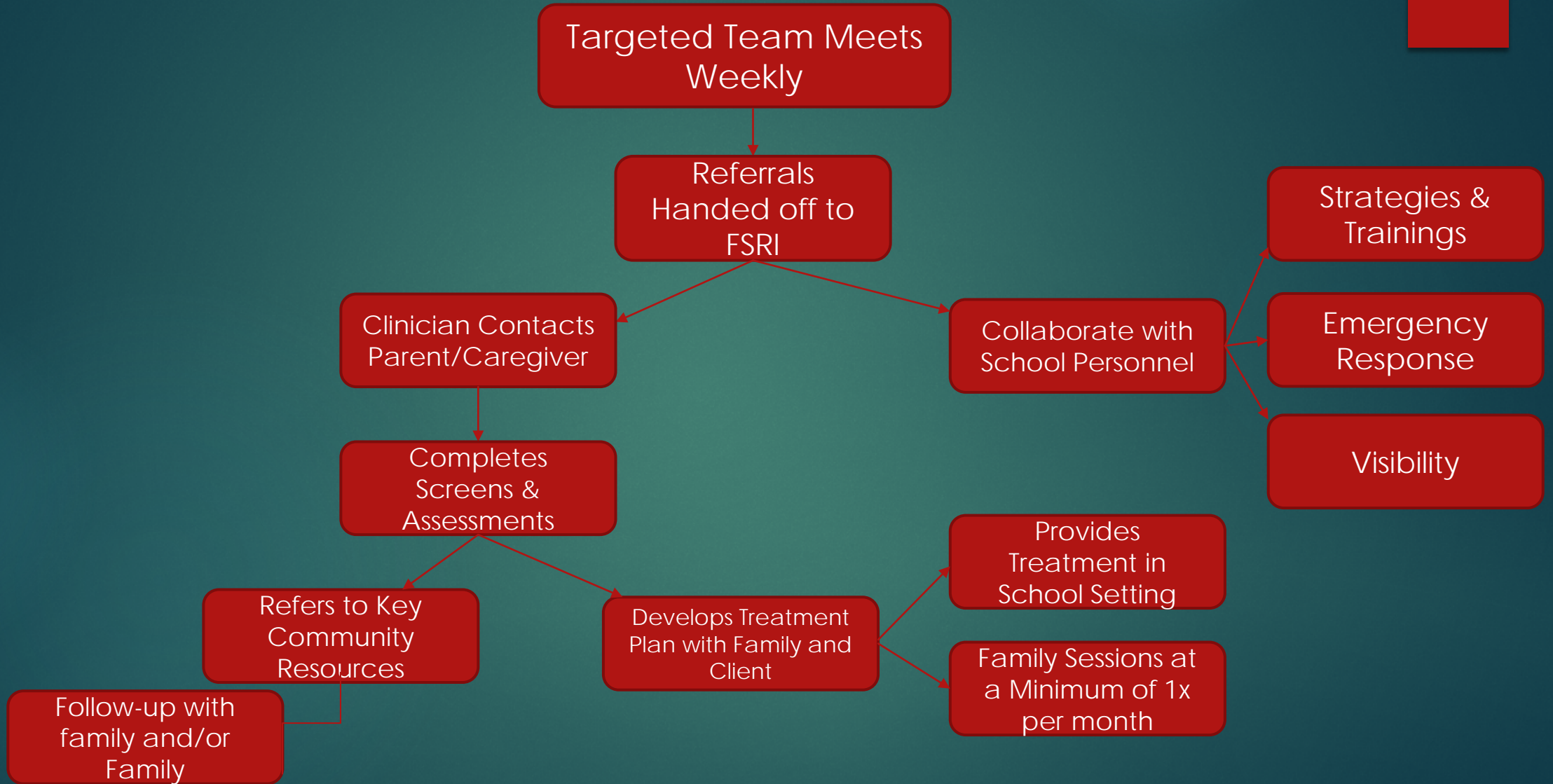
## Providence Public Schools' Targeted Teams



### Working together to make a difference!

- ▶ Principal
- ▶ Vice Principal
- ▶ Social Worker
- ▶ Psychologist
- ▶ Speech Pathologist/Occupational Therapist
- ▶ Nurse
- ▶ FSRI Clinician





# Family Engagement

- ▶ Family Voice & Choice
  - ▶ Active Participants & Contribute to Treatment Process
  - ▶ Be Heard & Respected
  - ▶ Foster Positive Communication
  - ▶ Meet Families and Students Where They're At



# Stepping Stones Toward Achieving Positive Family Engagement



- ▶ School Personnel Introducing the FSRI School Based Program to Families
- ▶ Removing the Stigma from Receiving Services
- ▶ Being Mindful of Culture

# Cultural Agility and Responsive Care

- ▶ One Third of the FSRI School Based Clinical Team is Bilingual
- ▶ Being Mindful and Inclusive of Cultural Traditions and Beliefs
- ▶ Providing Documentation in Preferred Language
- ▶ Utilizing Interpreter Services



# Meeting Families Where They're At

## Emotionally

- ▶ Developing Attainable Goals Together
- ▶ Listening, Respecting, Exploring Strengths and Needs
- ▶ Helping Families Use Strengths to Overcome Challenges

## Physically

- ▶ Offering Sessions at Convenient Locations and Times:
  - ▶ School
  - ▶ Home
  - ▶ Community
  - ▶ Office



# 2017-2018 Statistics



# Lessons Learned Going Forward

- Family
  - School
  - District
- Experience
- 

# Put Into Practice: An Experiential Review

Putting it all together: A Case Review