



Lawndale Elementary School District & University of Southern California Collaborative Model: Integrating Trauma-Informed Services with the District- Wide Positive Behavior Support Implementation

Presenters:

Jorge Luis Arroyo – Director of Student Support Services, Lawndale Elementary School District

Suh Chen Hsiao – Clinical Associate Professor, USC School of Social Work

Maria Ruelas – District Social Worker, Lawndale Elementary School District

Vivien Villaverde – Clinical Associate Professor, USC School of Social Work

21st Annual School Mental Health Conference

September 30, 2016



Objectives:



Objective 1: The participant will understand the evolution of university-district partnership as it changes from an informal to a more formal collaboration “Teaching Institute” in response to the increase in social service needs within schools

Objective 2: The participant will be able to describe the current RTI model/framework and PBIS implementation used in this district-university collaborative model that highlights the integration of the micro, mezzo, and macro levels of social work practice.

Objective 3: The participant will be able to identify three strategies to influence established systems such as schools and districts in changing the infrastructure for student support service delivery based on district students’ data.



Presentation Outline:



- I. What is a Teaching Institution (TI)?
- II. Overview: TI & Lawndale ESD Collaboration
- III. Lawndale Elementary School District Capacity Development
- IV. Data Collection & Program Evaluation
- V. Next Steps...



What is a Teaching Institution?



Benefits: Agency

- Full USC Partnership
- Honorary Adjunct Faculty
- Exchange of Information & Resources
- Research
- Increased Capacity

Benefits: Field Education

- Curriculum Alignment & Adaptation
- Higher Quality of Training & Supervision
- Multi-Disciplinary Learning Accountability
- Increased Capacity



TI Challenges:



- **Paradigm Shift**
- **Program / Curriculum**
- **Development
Sustainability**



Immediate Agency Implications



- **Host 10-25 MSW Interns**
- **TI Development**
 - Proposal Summary**
 - Program Description & Student Assignment**
 - Course Curriculum Plan**
- **Required Coordinator / Field Instructor(s)**
 - **MSW Level Supervisor**





Micro Practice Work

Mezzo Practice Work

Macro Practice Work





Trauma and Learning

<http://www.traumaandlearning.org/>





**PRE-
COLLABORATION**



**COLLABORATIVE
PARTNERSHIP**



**FUTURE OF
COLLABORATION**



Pre-Collaboration



OUR PROBLEMS

- Lack of Mental Health Services
- Medi-Cal Coverage (limitations; emergency, full-scope)
- Costs for Mental Health Providers



Collaborative Partnership



SOLUTIONS

- Positive Behavior Interventions and Supports (PBIS)
- Hire a District Social Worker to Coordinate Mental Health Services
- Intern Program
 - USC Teaching Institute
 - Universities
 - USC
 - LMU
 - CSUF
 - CSULB
 - CSUDH
 - Community agencies



Collaborative Partnership



Creating an Intern Program

- Creating a strong foundation
 - Organization is KEY
- Curriculum
- Orientation
- Intern Experiences



Lawndale ESD

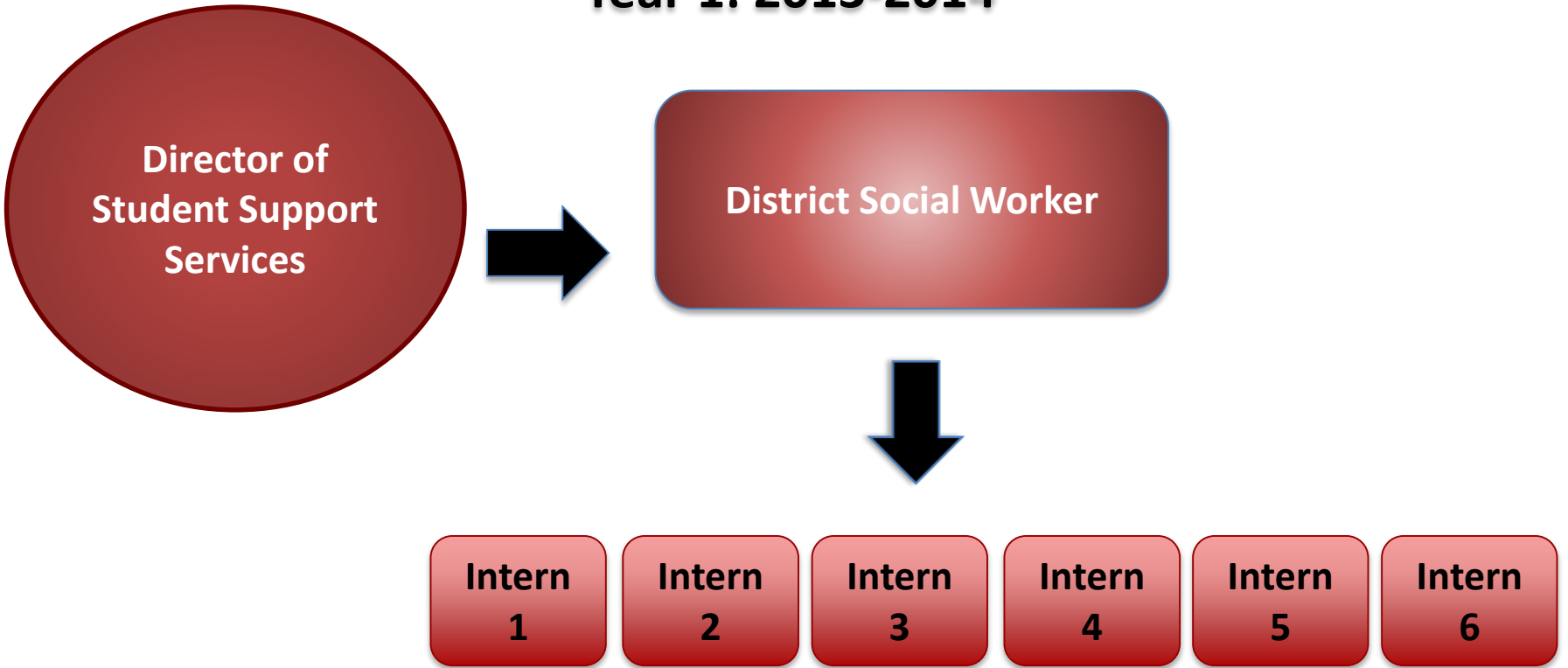


- Developed a Mental Health program under Student Support Services
- MSW Interns
 - 1st Year: 5 MSW Interns
 - 2nd Year: 28 MSW Interns
 - 3rd Year: 56 MSW Interns
- MSW Staff
 - 1st Year: 1 MSW
 - 2nd Year: 4 MSW
 - 3rd Year: 9 MSW
- Current Status: 1 MSW to 5-7 MSW Interns per school
- Cost/Benefit:
 - Cost - MSW Field Instructor / Program Coordinator
 - MSW Intern hours of services (United Way: \$12-\$22/Hr.):
56 x 16 Hrs./Wk. = 896 x \$22 = \$19,712 weekly
\$19,712 x 30 Weeks = \$591,360.00

Lawndale ESD Capacity Building



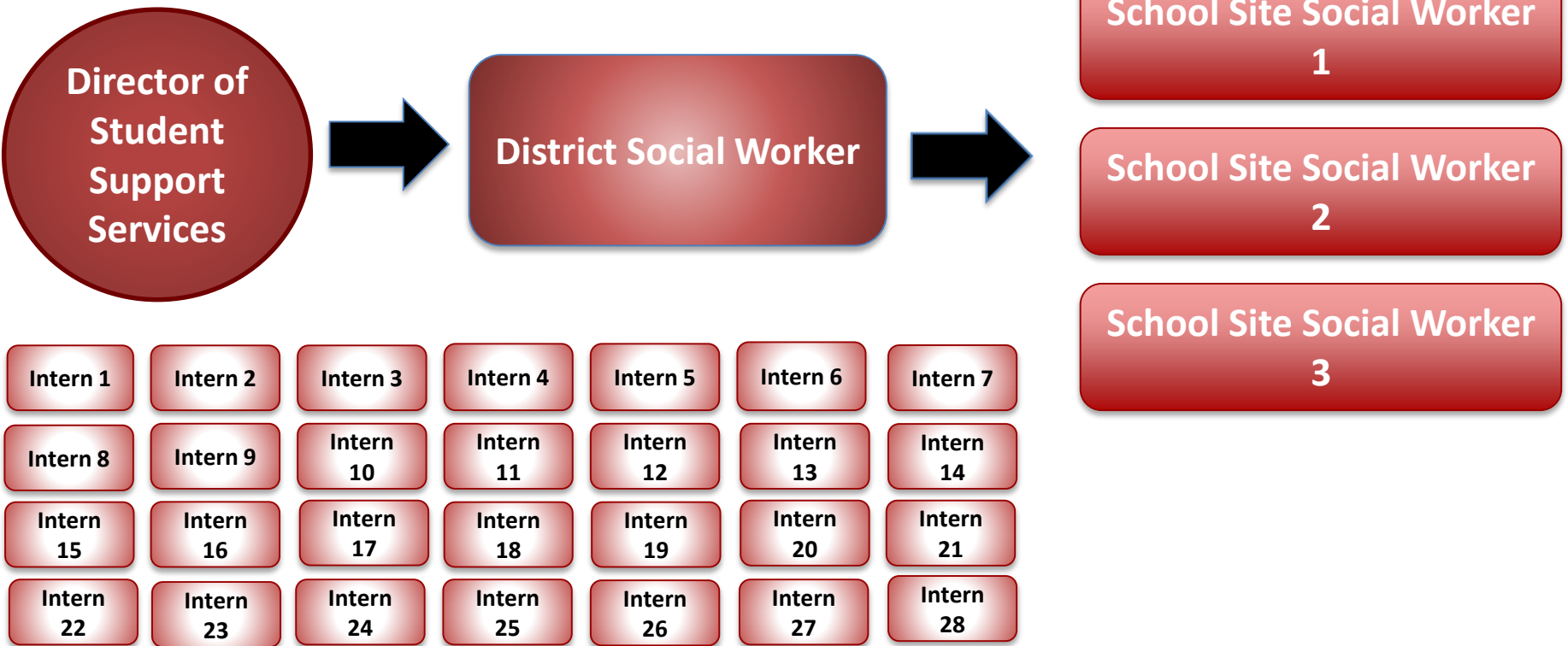
Year 1: 2013-2014



Lawndale ESD Capacity Building



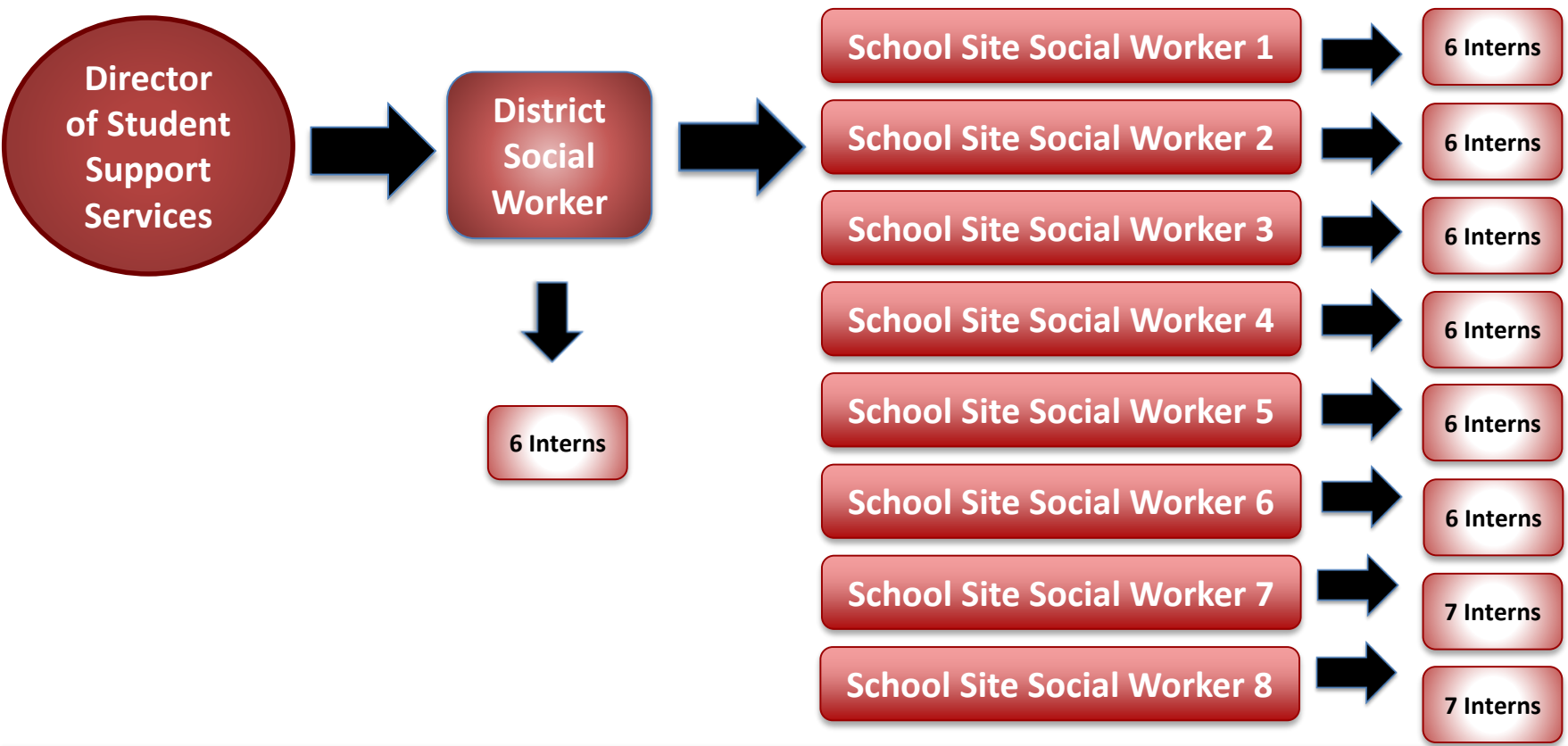
Year 2: 2014-2015



Lawndale ESD Capacity Building



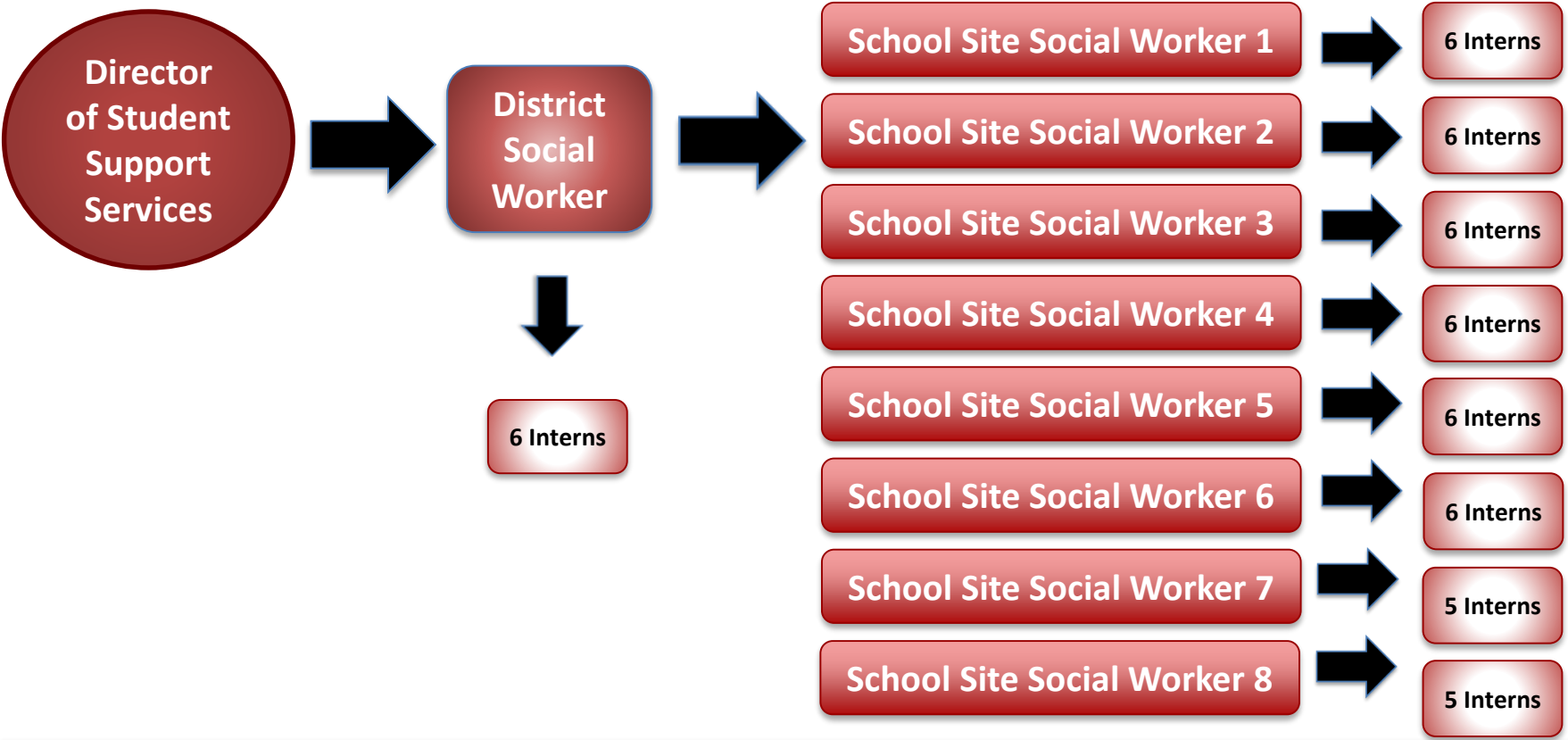
Year 3: 2015-2016



Lawndale ESD Capacity Building



Year 4: 2016-2017





Support Services

- Individual Counseling
- Student Groups
- Crisis Response
- Socio-Emotional Curriculum
- Outreach and Parenting Classes
- Consultation
- Mediation / Advocacy
- Resource Linkage



Lawndale ESD Capacity Building



Phase 1:

- Pilot year – select schools
- TI infrastructure and training program development for quality direct services to students
- PBIS alignment

Phase 2:

- Full scale model of the support services (8 schools)
- School-wide access to support services
- Continued PBIS alignment
- Increase in Professional Development and EBP - Target Audience: Support Services Staff

Lawndale ESD Capacity Building



Phase 3:

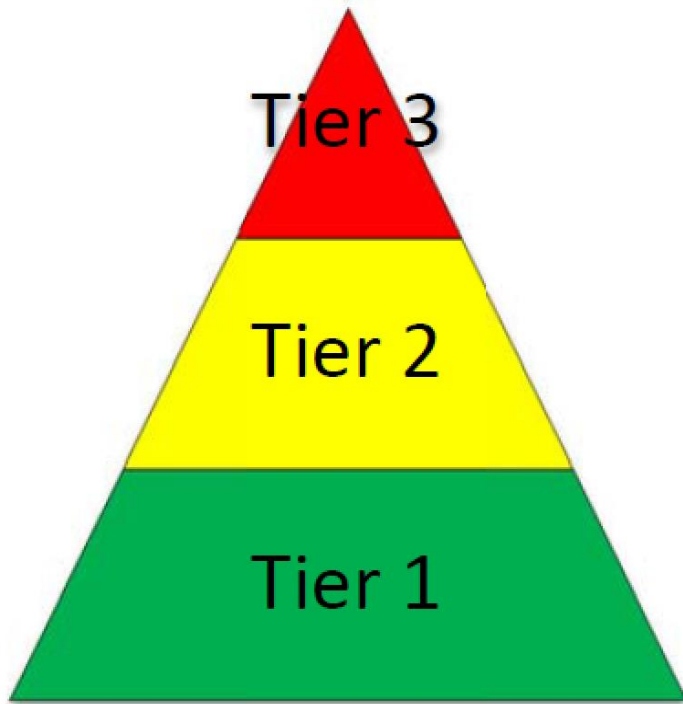
- Continued stabilization and access to Support Services
- Continued PBIS alignment
- Increase in Professional Development and EBP – CBITS, SSET, Trauma 101, (Target: Support Services & Certificated Staff)

Phase 4: Next Steps

- Continued stabilization and access to Support Services
- Expansion of Tier 1 Support Services
- Continued PBIS alignment
- Increase in Professional Development and EBP – PFA, Bounce Back, Secondary Traumatic Stress (STS), 2nd Step Curriculum, etc. (Target: Support Services, Certificated, & Classified Staff)
- Additional Partnership - USC/RAND/UCLA Trauma Services Adaptation Center for Resilience, Hope and Wellness in Schools and Communities

Response-to-Intervention

Multi-Tier System of Supports



Source: The Kansas Multi-Tier System of Supports. September 2010.

<http://www.cde.ca.gov/ci/cr/ri/index.asp>



Lawndale ESD Status

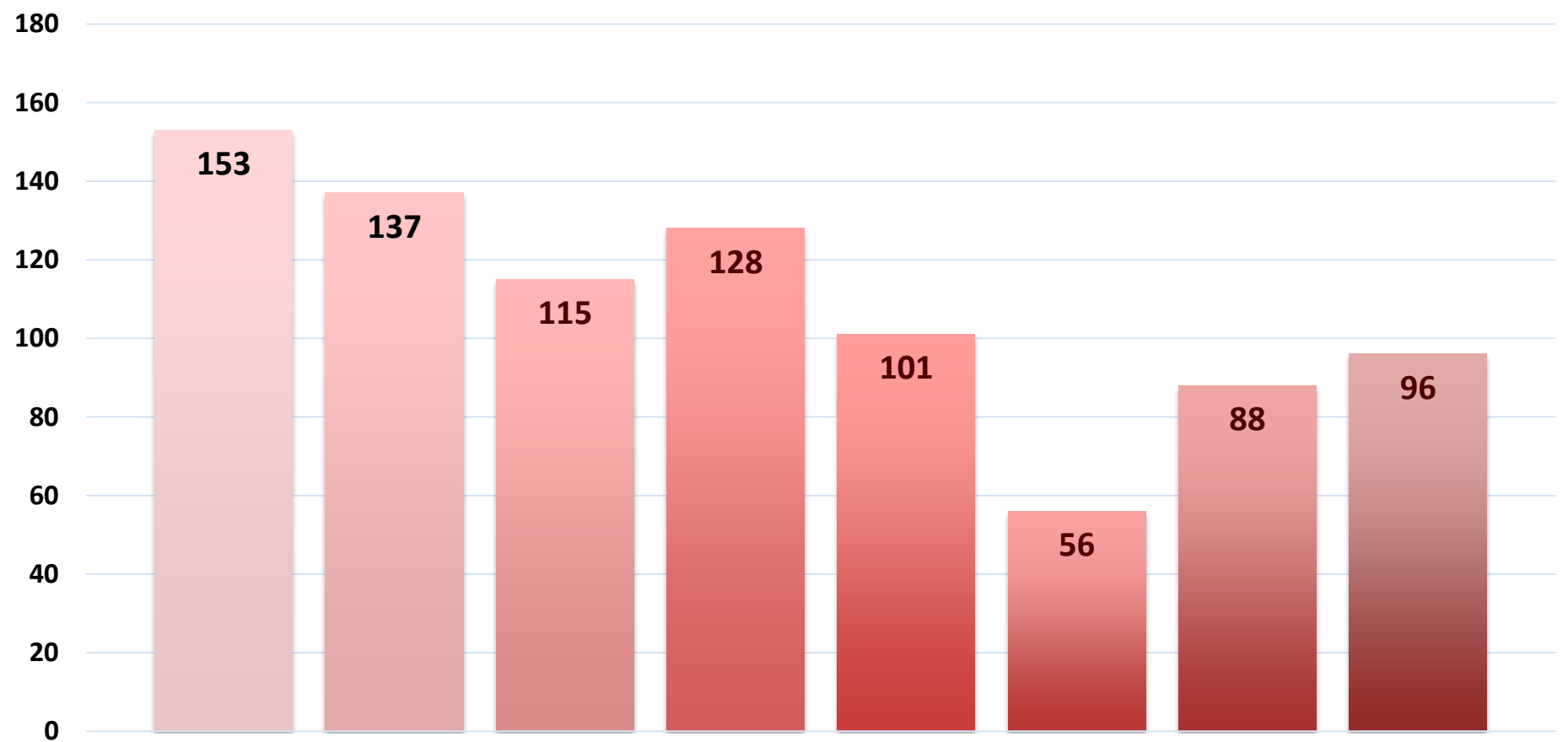


LOOKING AT THE DATA

- Zero Waitlist
- School Climate Change
 - Suspensions
 - Expulsions
- ADA/ General Attendance



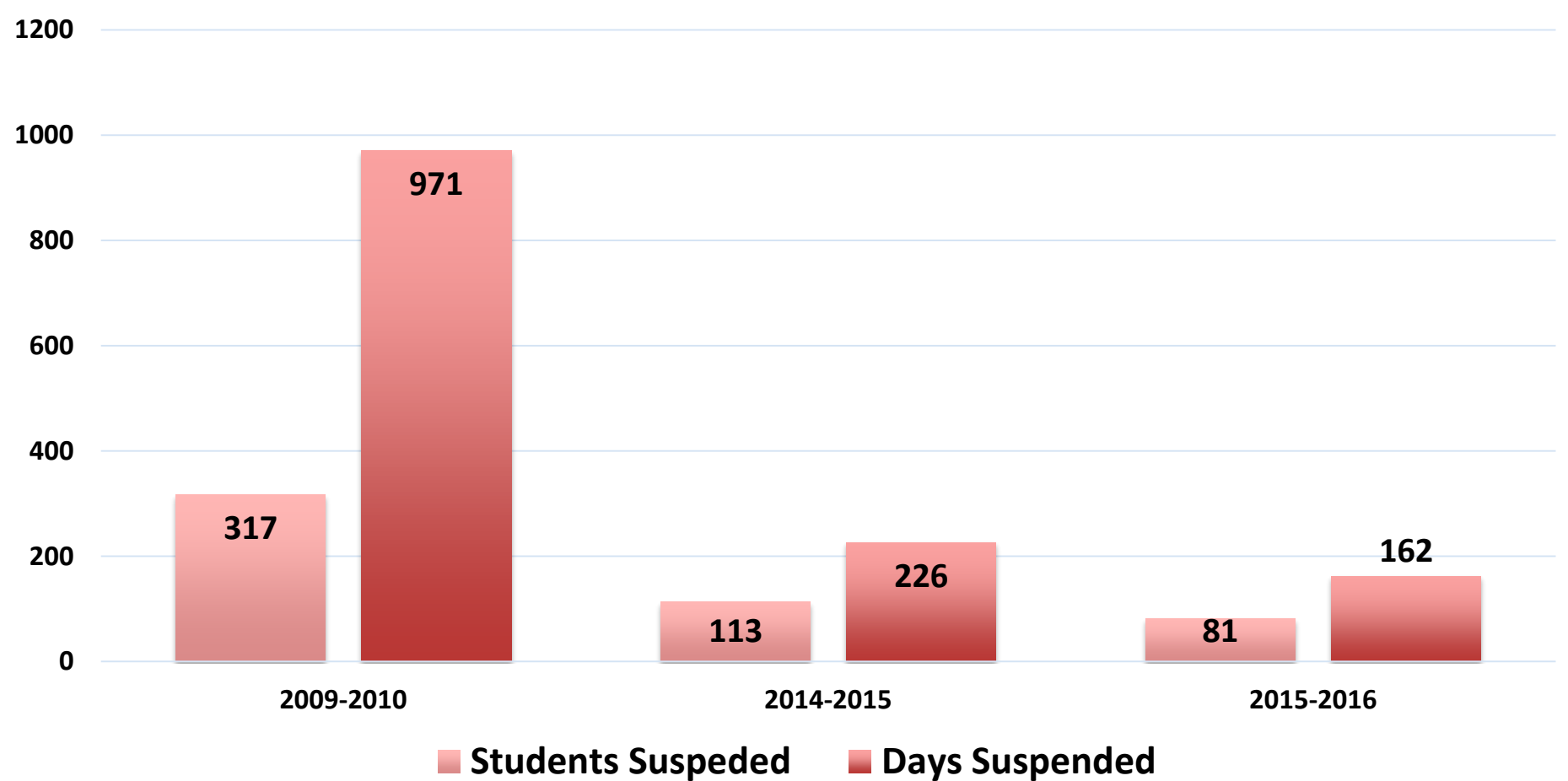
Total Students Serviced by Interns



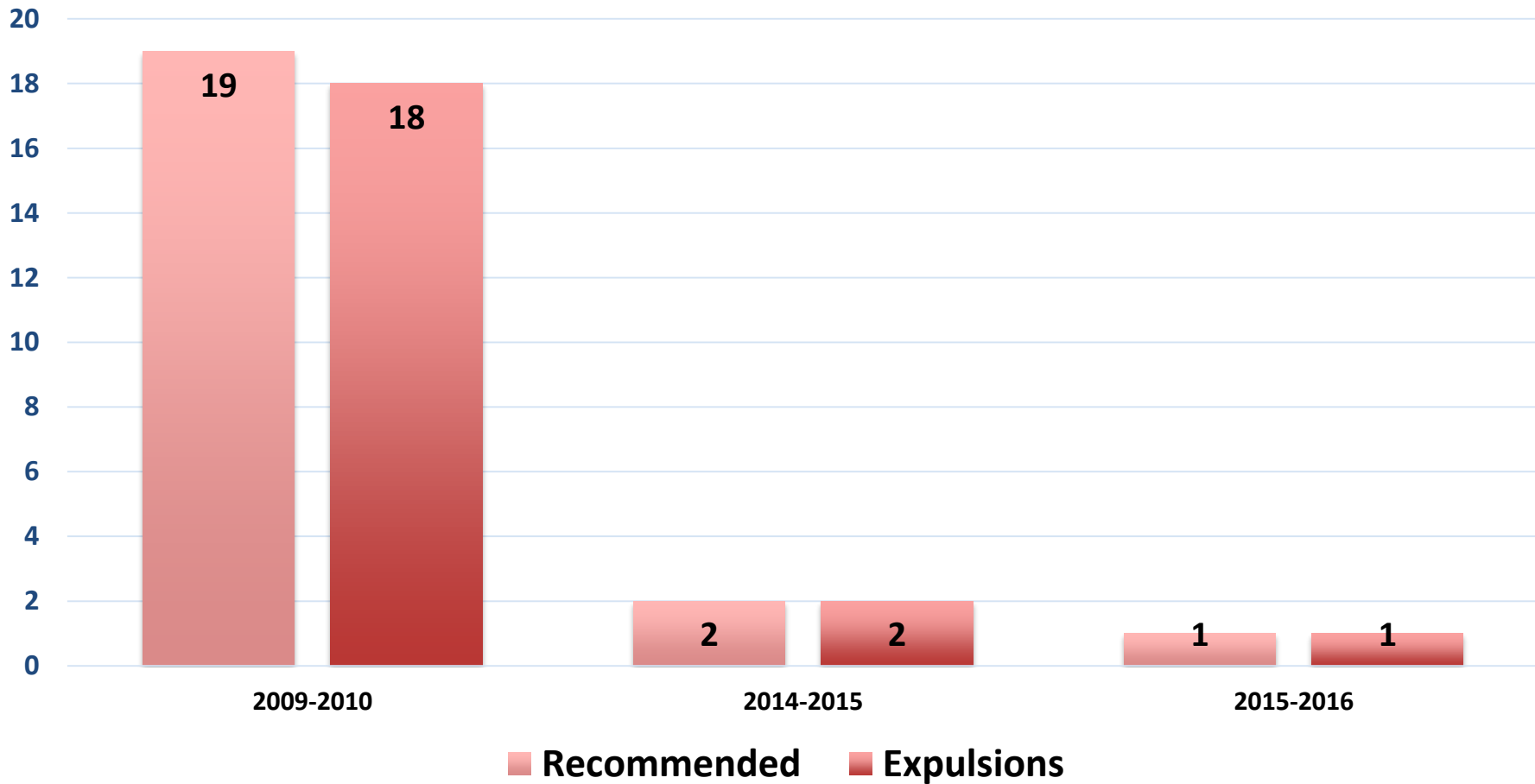
TOTAL OF STUDENTS SERVICED: 874



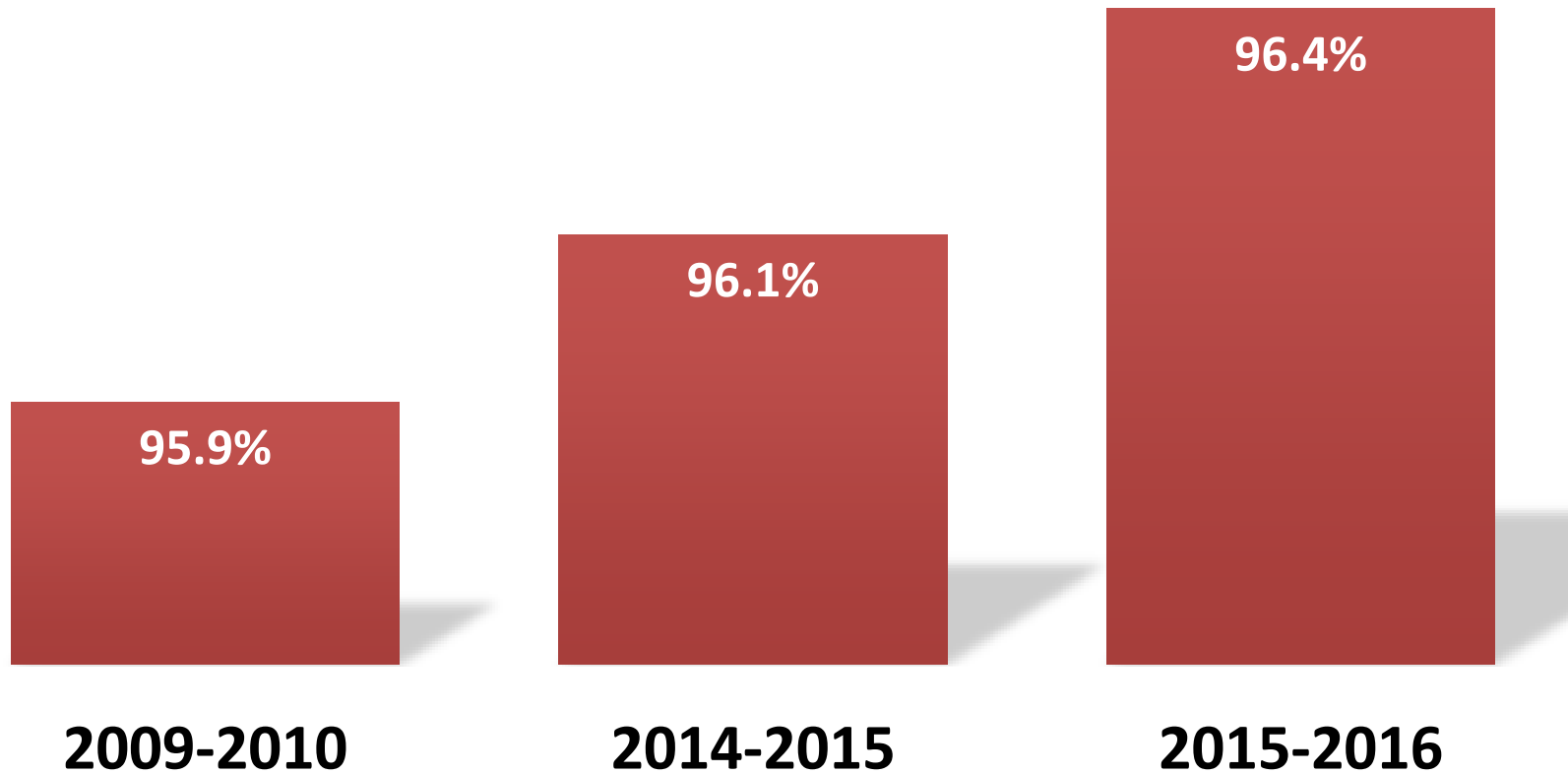
Number of Suspensions



Number of Expulsions



Average Daily Attendance



Future of Collaboration



**Parent
Outreach**

KSP-2nd Step

**Restorative
Justice**

Next Steps...

PFA

Data Collection

STS

**Trauma
Informed**

RESEARCH

Bounce Back





COMMENTS?

QUESTIONS?



Contact Information



Maria Ruelas, MSW, ACSW
District Social Worker
Lawndale Elementary School District
(LESD)
(310) 973-1300
maria_ruelas@lawndalesd.net

Vivien Villaverde, MSW, LCSW
Clinical Associate Professor – Field
Education
USC – School of Social Work
213.821.7068
villaver@usc.edu

Jorge Luis Arroyo
Director of Student Support Services
Lawndale Elementary School District
(LESD)
(310) 973-1300
jorge_arroyo@lawndalesd.net

Suh Chen Hsiao, MSW, PPSC, LCSW
Clinical Associate Professor
Assistant Director, Field Education
USC School of Social Work
Department of Adults & Healthy Aging
(213) 821-0970
shuhsiao@usc.edu

