

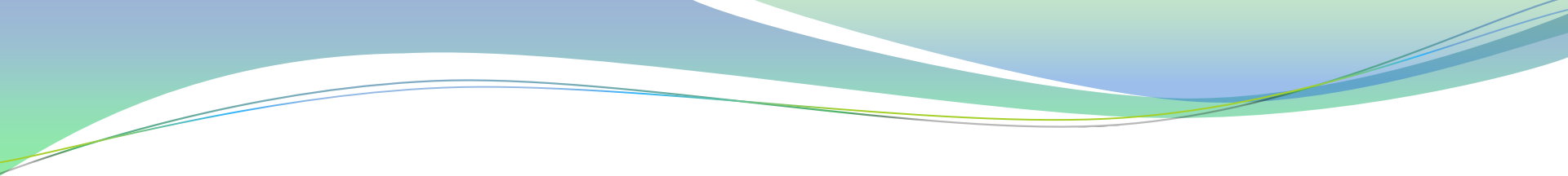
HŌKŪPA‘A

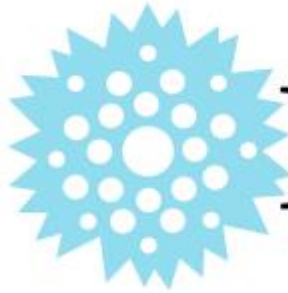
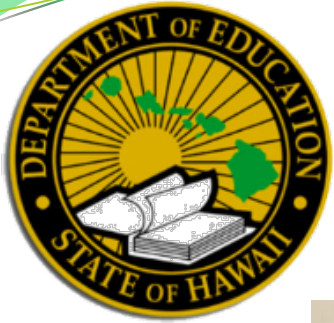
Aia ko Hawai‘i mua iho i ka mālama i nā ‘ōpio
Caring for Hawai‘i’s future by caring about Hawai‘i’s youth

Art Souza, DOE West Hawaii Complex Area Superintendent
Sandi Taosaka, DOE West Hawaii Community Engagement Specialist
Kei-Lin Cerf, UH Hilo Director of Strategic Community Development



“Why does youth
voice matter?”





HŌKŪPA‘A



UNIVERSITY
of HAWAII®

HILO



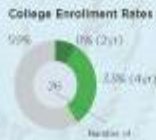
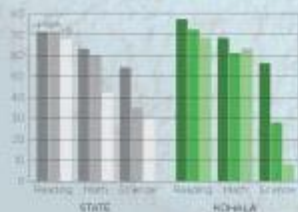
LOOKING AT STUDENT PERFORMANCE BY DOE SCHOOL COMPLEX

Students take proficiency tests in fourth grade, eighth grade, and in high school to measure progress in Reading, Math, and Science. While test scores do not measure all areas of student ability, proficiency scores are indicators of where students are struggling to master these subjects as well as their readiness for college.

A proficiency score is the percentage of students who score "good or above" in each subject area.

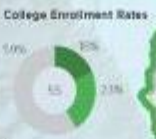
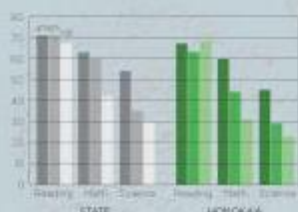
In several subjects and grade levels, our school complexes score above or well above the state averages. However, overall scores decrease with age with fewer students showing proficiency at the high school level.

KOHALA COMPLEX



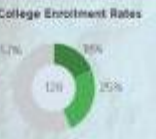
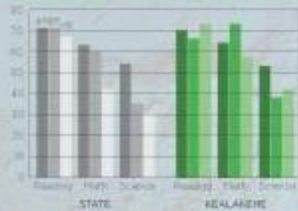
Student Characteristics
2.5% English Language Learners
14.6% Special Education Students
68.3% Free and Reduced-cost Lunch Recipients

HONOKA'A COMPLEX



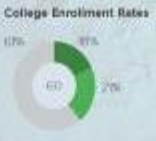
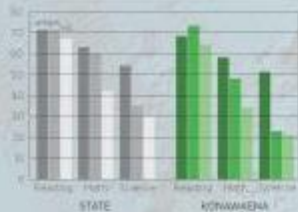
Student Characteristics
7.6% English Language Learners
10.1% Special Education Students
67.4% Free and Reduced-cost Lunch Recipients

KEALAKEHE COMPLEX

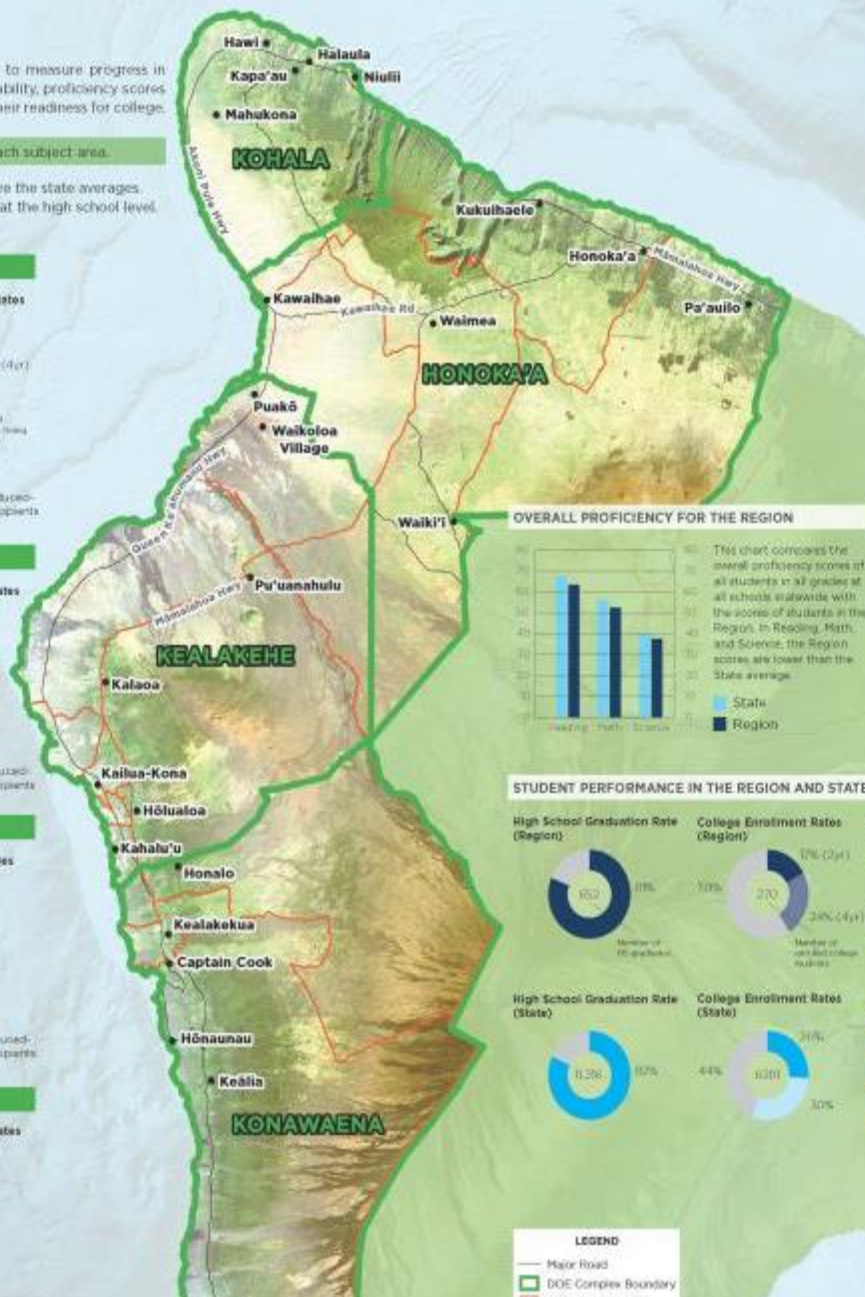


Student Characteristics
13.5% English Language Learners
9.0% Special Education Students
60.4% Free and Reduced-cost Lunch Recipients

KONAWAENA COMPLEX



Student Characteristics
8.3% English Language Learners
10.2% Special Education Students
70.0% Free and Reduced-cost Lunch Recipients



WEST HAWAII EDUCATION SYSTEM

A Student/School-Focused Approach for Collective Impact

At Hōkūpā'a, we put our students and schools at the center of the partnership process. Once we understand what is needed to support student education, we can help to connect partners to also support their health, wellbeing, and connection to the community.

In the West Hawai'i Region, a school complex is comprised of all the public schools that feed into the high school(s) in the community. The following charts indicate the testing proficiency, graduation data, college enrollment, and student demographics of the schools for each complex. Hōkūpā'a will use this data as a starting point to determine if our collective work improves outcomes in subsequent years.

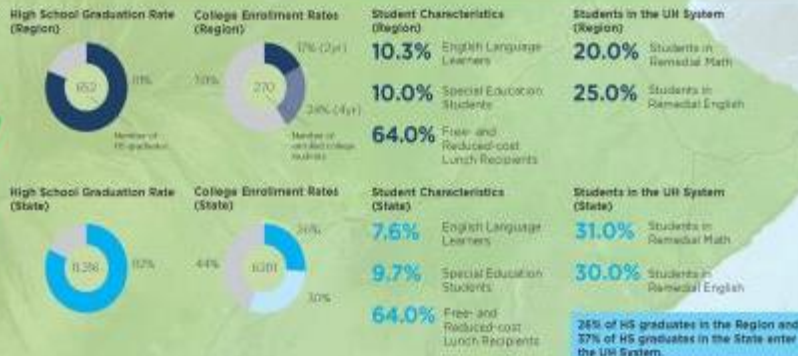
Education and Hawai'i's Future

The leaders of Hawai'i Island continue to search for new ways to strengthen our economy through innovations in sustainable energy and agriculture, new technologies, and other emerging business opportunities. If the responsibility to lead Hawai'i Island will fall to our young people, they will need our help to understand our island's potential and master new pathways in science, technology, engineering, and mathematics (STEM).

OVERALL PROFICIENCY FOR THE REGION



STUDENT PERFORMANCE IN THE REGION AND STATE



26% of HS graduates in the Region and 37% of HS graduates in the State enter the UI System.



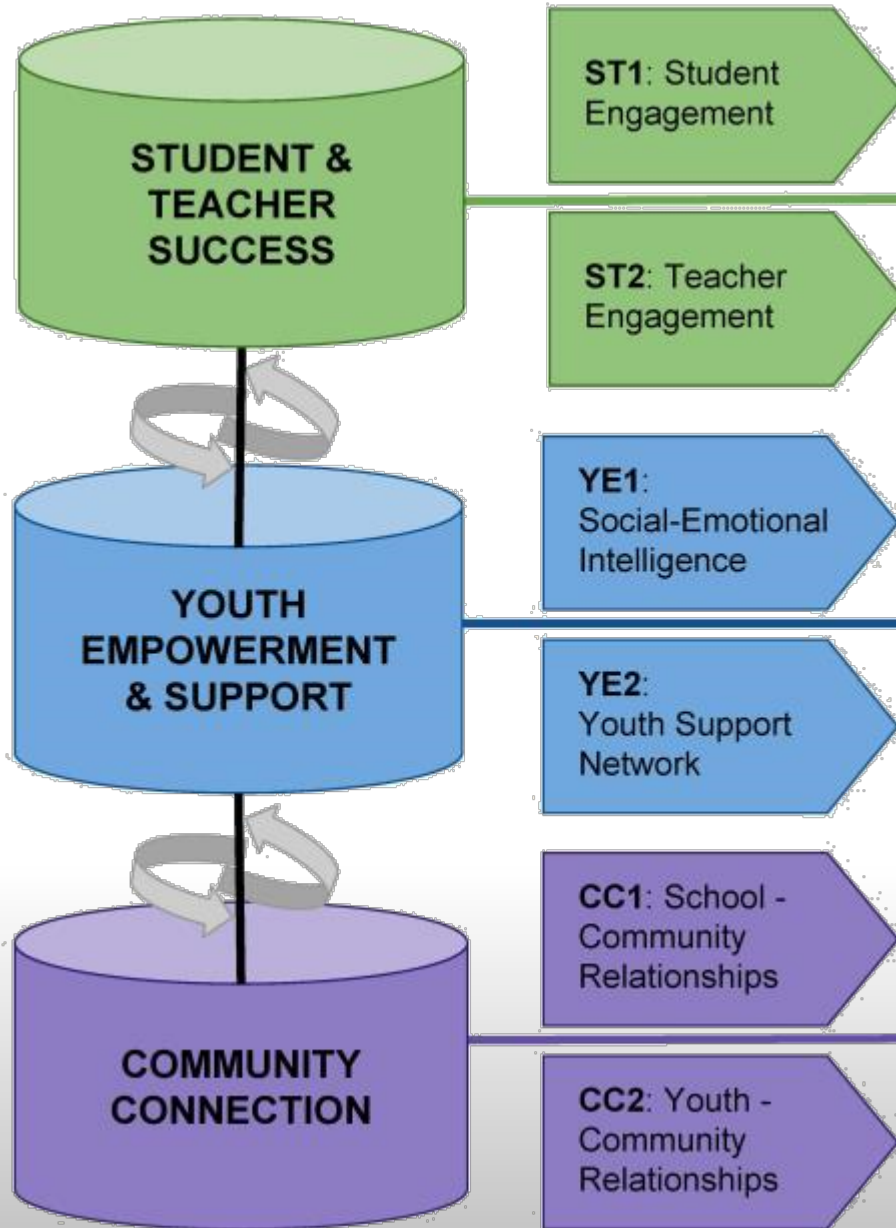
DATA INCLUDED IN THIS BROCHURE PERTAINS TO THE NON-CHARTERED SCHOOLS. WE LOOK FORWARD TO INCORPORATING DATA FROM ALL SCHOOLS IN THE FUTURE.

Source: DOE, 2014; Hawaii IPEDS, 2014

Looking Glass Exercise

If you could have done something differently for children in your community 10 years ago, what would that have been?





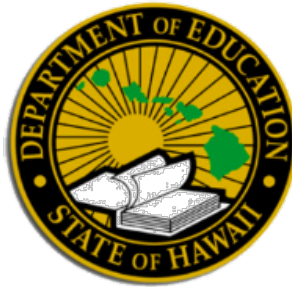
What is Hōkūpa'a?

Hōkūpa'a is a **collective impact** initiative started by the leaders of West Hawai'i who committed to a shared mission for the success of our youth and young adults



See also Collective Impact Forum

Our Partners



KAMEHAMEHA SCHOOLS®

Friends of  the Future

UNIVERSITY
of HAWAII®

HILO



THE 
LEARNING
COALITION




UNIVERSITY of HAWAII®
HAWAII COMMUNITY COLLEGE
PĀLAMANUI



 *West Hawaii
Community Health Center*

Roberts Foundation



Our Mission

We work to **empower young people, support schools, and connect community** to increase the personal, educational, and economic success for youth and the future of Hawai'i.

Strategies to Engage

1. Come from a place of **EMPATHY**, not judgment
2. Seek first to **UNDERSTAND**
3. **REFLECT** learning back to stakeholders

Empathy Building

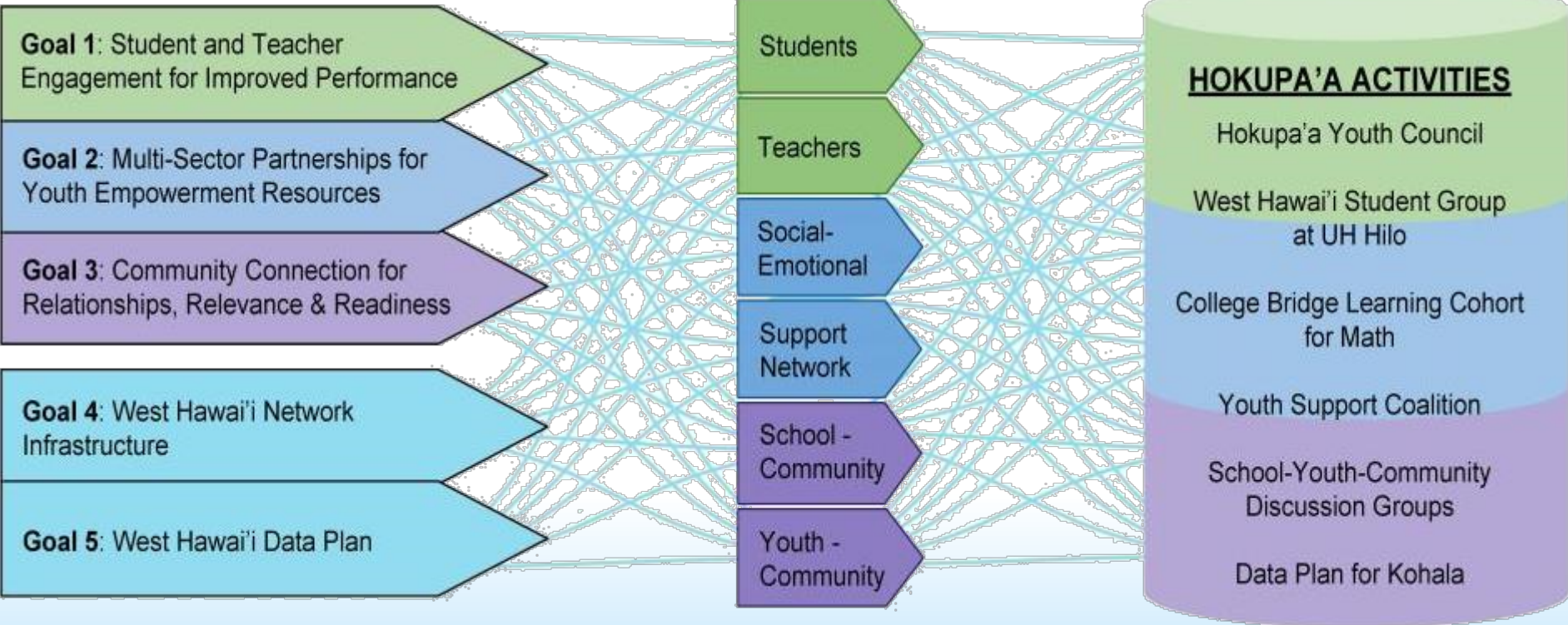
“What are the environmental problems, which are outside of your school’s ability to solve, that are keeping your kids from reaching their full potential?”



Priority Areas

1. Social-emotional health of youth (empowerment)
2. Student and teacher engagement
3. Partnerships with families and community

Our Work in 2016



Engagement Theory

by Kahn (1990)

Availability

Physical

Emotional

Confidence

External Life

Safety

Peers

Teams

Leaders

Culture

Meaning

Creativity/Autonomy

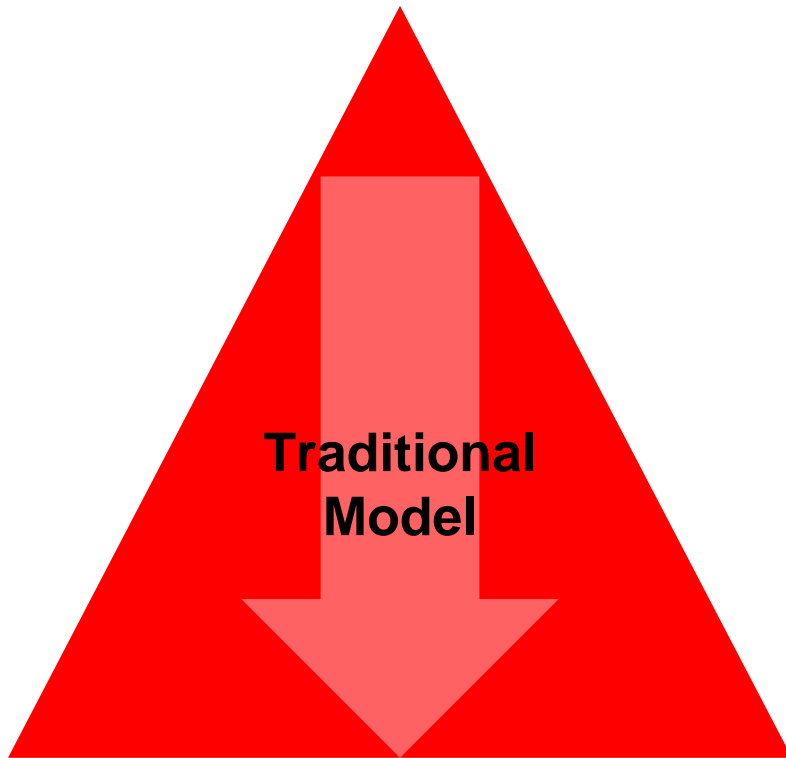
Status/Influence

Appreciation/Value

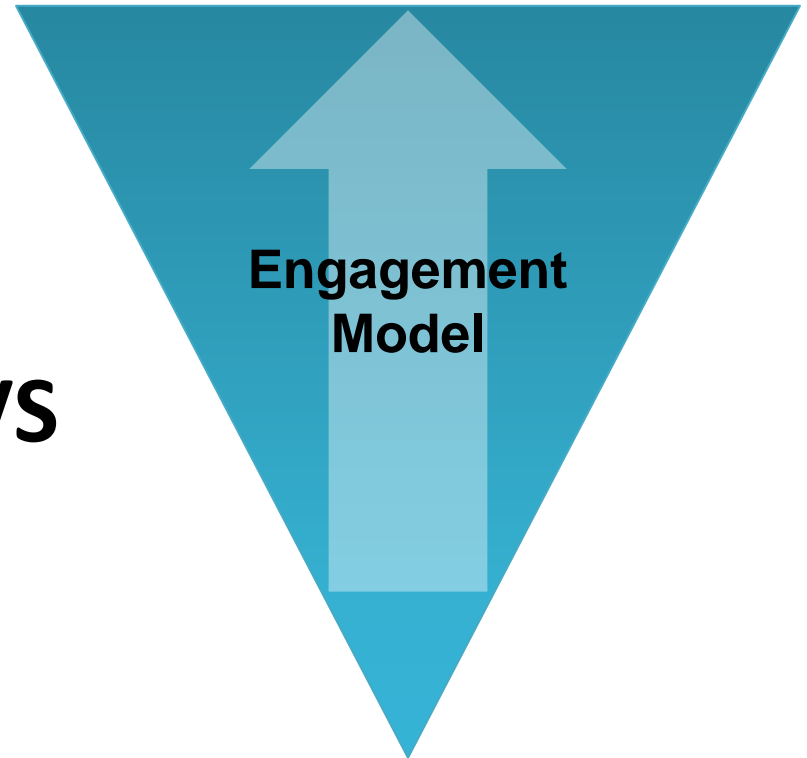
Work-Life Balance

How do we solve the problem of student and teacher disengagement?





VS



Fed, State, CAS & Principal Driven

Student & Teacher Driven

**Goal:
“Increase
Student
Engagement”**

VS

**“What would an
engaged
classroom look
like?”**



Trying to tackle Student
Engagement as a huge concept



Exploring Student/Teacher
Engagement in action

Hōkūpaʻa Youth Council

Youth + Teacher Coaches = Strong Youth Voice



Youth Support Coalition

- Partners – School Based Behavioral Health Counselors, West Hawaii Service Providers, DOE
- Multi-sector collaboration to improve youth support services system

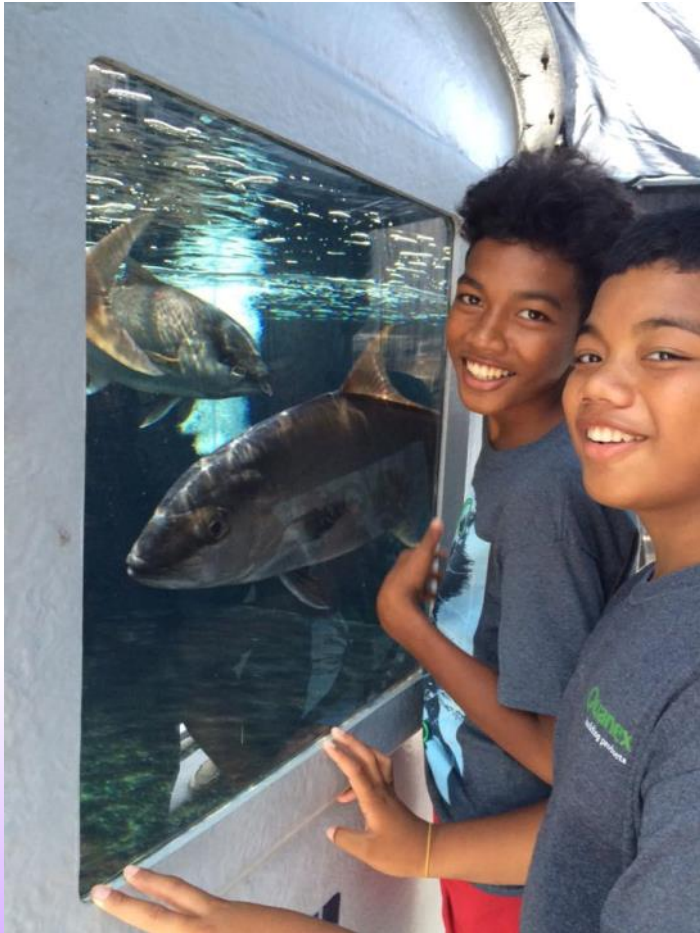




Early College Partnership



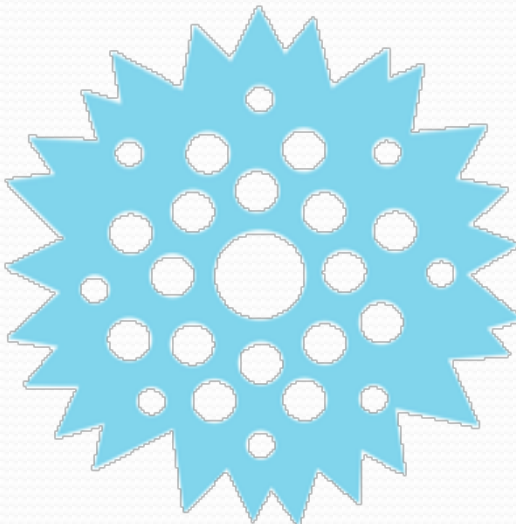
Blue Water Mari Culture



Students use Thinking Maps to create prototypes for local marine biology business

CEEDs of PEACE





HŌKŪPA‘A

Aia ko Hawai‘i mua iho i ka mālama i nā ‘ōpio
Caring for Hawai‘i’s future by caring about Hawai‘i’s youth

Art Souza, DOE West Hawaii
Sandi Taosaka, DOE West Hawaii
Kei-Lin Cerf, UH Hilo

Art_Souza@notes.k12.hi.us
Sandra_Taosaka@notes.k12.hi.us
KLCerf@hawaii.edu