

Measuring The Impact Of Systems Change:

Connecting Data On
Service Providers To
Student Outcomes



Annual Conference on Advancing School Mental Health
New Orleans, LA | November, 2015

Victoria Sheppard, Samantha Broadhead
Jill Snyder & Melissa Pearrow

We will discuss.....

- Overview of Boston Public Schools
- Comprehensive Behavioral Health Model
- Partnership with UMass Boston
- Time Sampling
- Workshop Evaluations

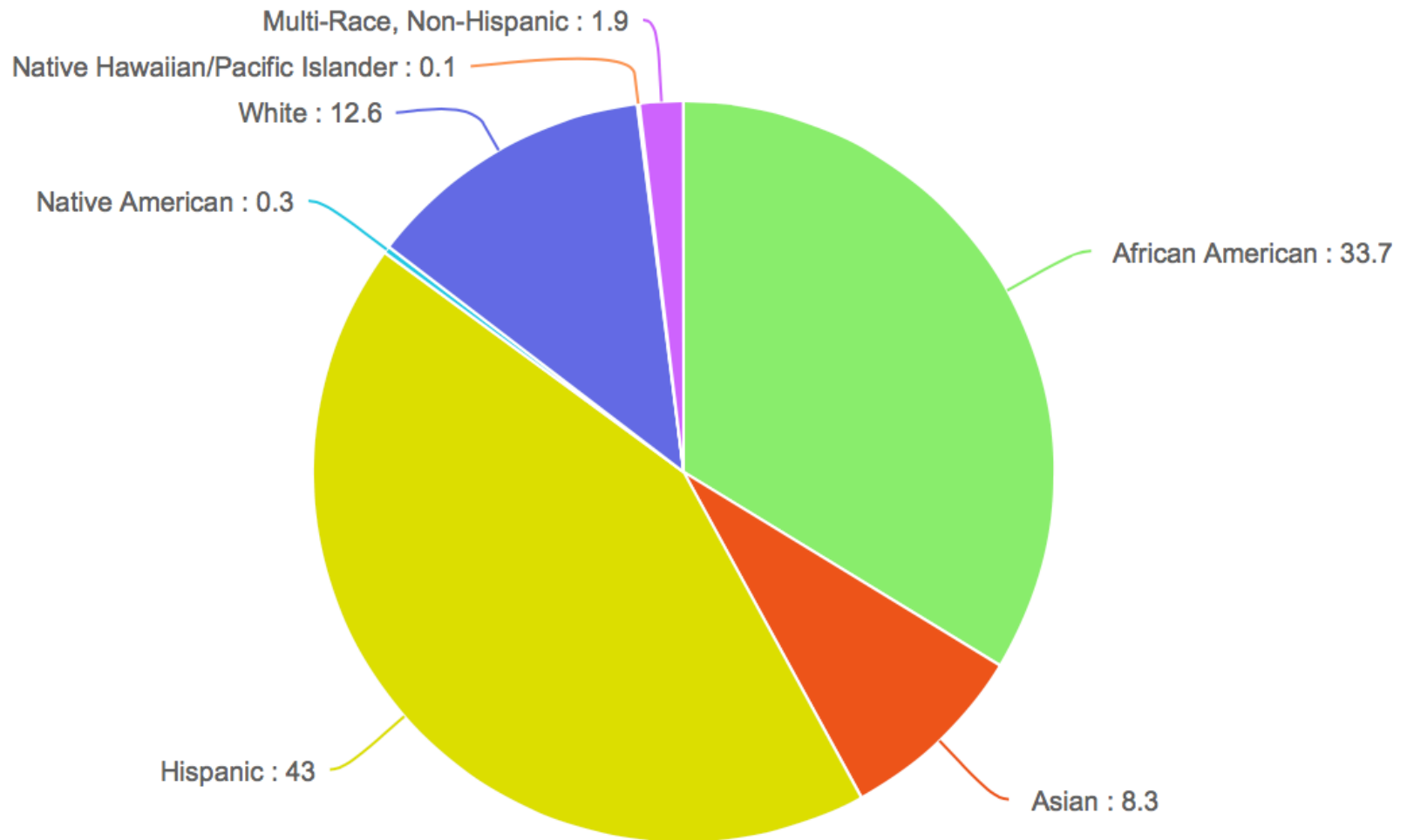


Boston Public Schools

- Diverse, urban district with more than 120 schools
 - 84 elementary
 - 18 middle/junior high
 - 34 secondary - 3 exam schools and 1 performing arts school
- Staffing across BPS
 - Over 8,000 professional staff
 - 54 school psychologists, 6 pupil adjustment counselors, 10 social workers, 3 behavior specialists



BPS Student Demographics



Behavioral Health in Boston

- 1 in 5 children in Boston have experienced 2 or more adverse childhood experiences → mental health issues
 - 6% of Boston children diagnosed with ADD or ADHD
 - 4% of Boston children diagnosed with anxiety issues
 - 2.4% of Boston children diagnosed with Depression
- Academic success is negatively affected by behavioral health issues
 - Truancy
 - Low performance
 - Dropouts

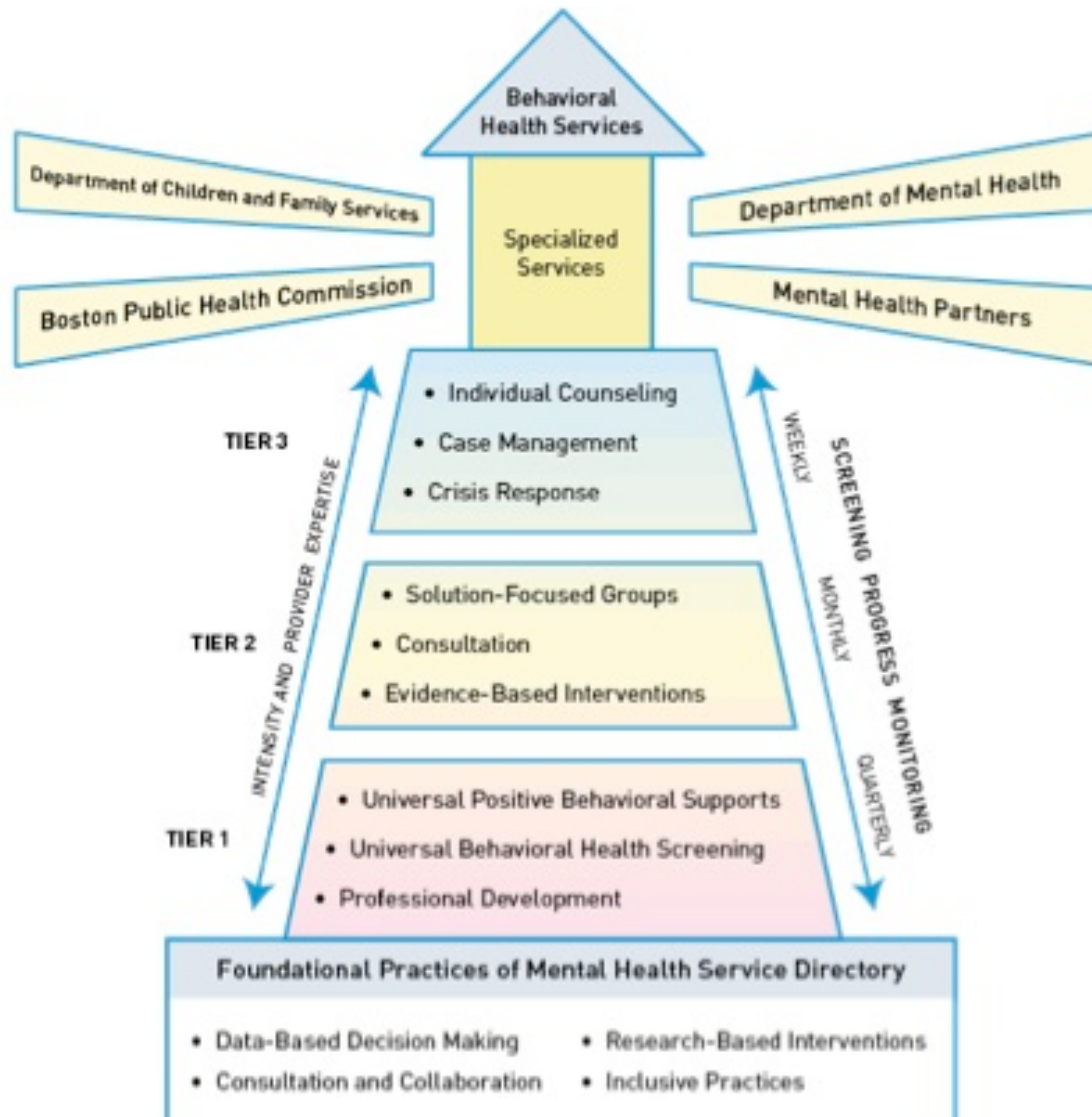


Need for CBHM

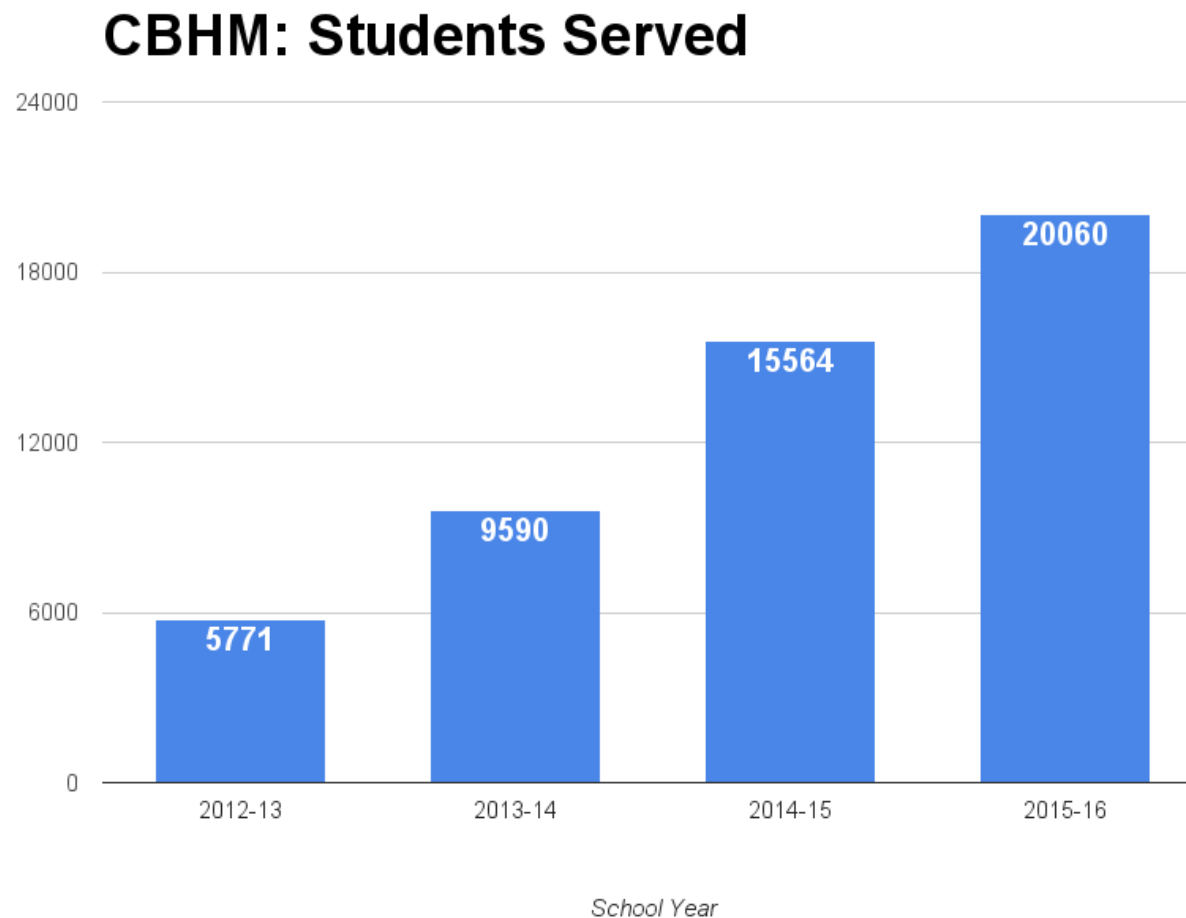
- More than 75% of youth with mental health issues do not receive services
- In 2012 mental health services were rated as the highest need in 66% of schools in the BPS district
- Comprehensive Behavioral Health Model (CBHM) developed in collaboration with Boston Children's Hospital and UMass Boston



About CBHM

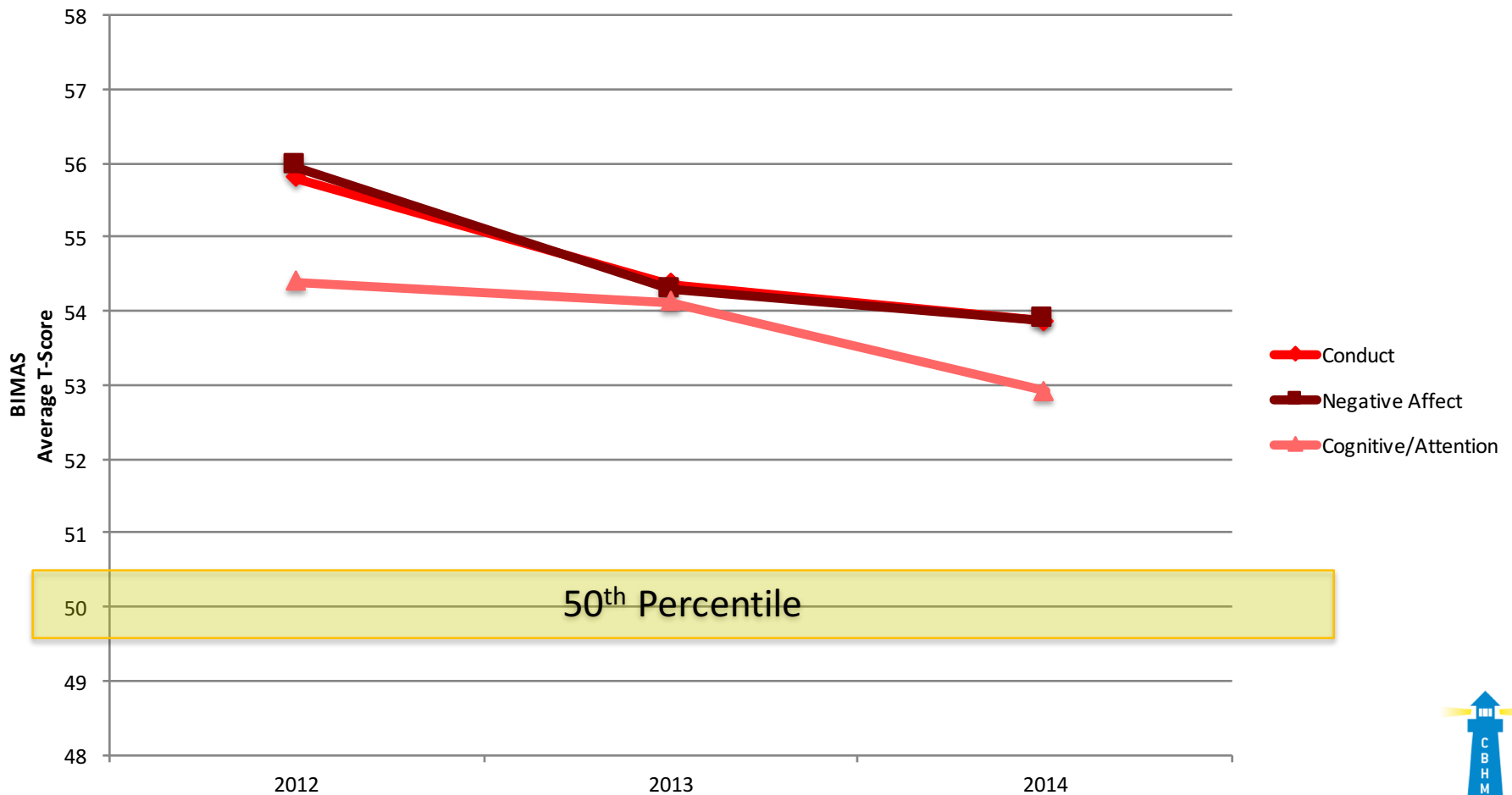


CBHM: Students Served



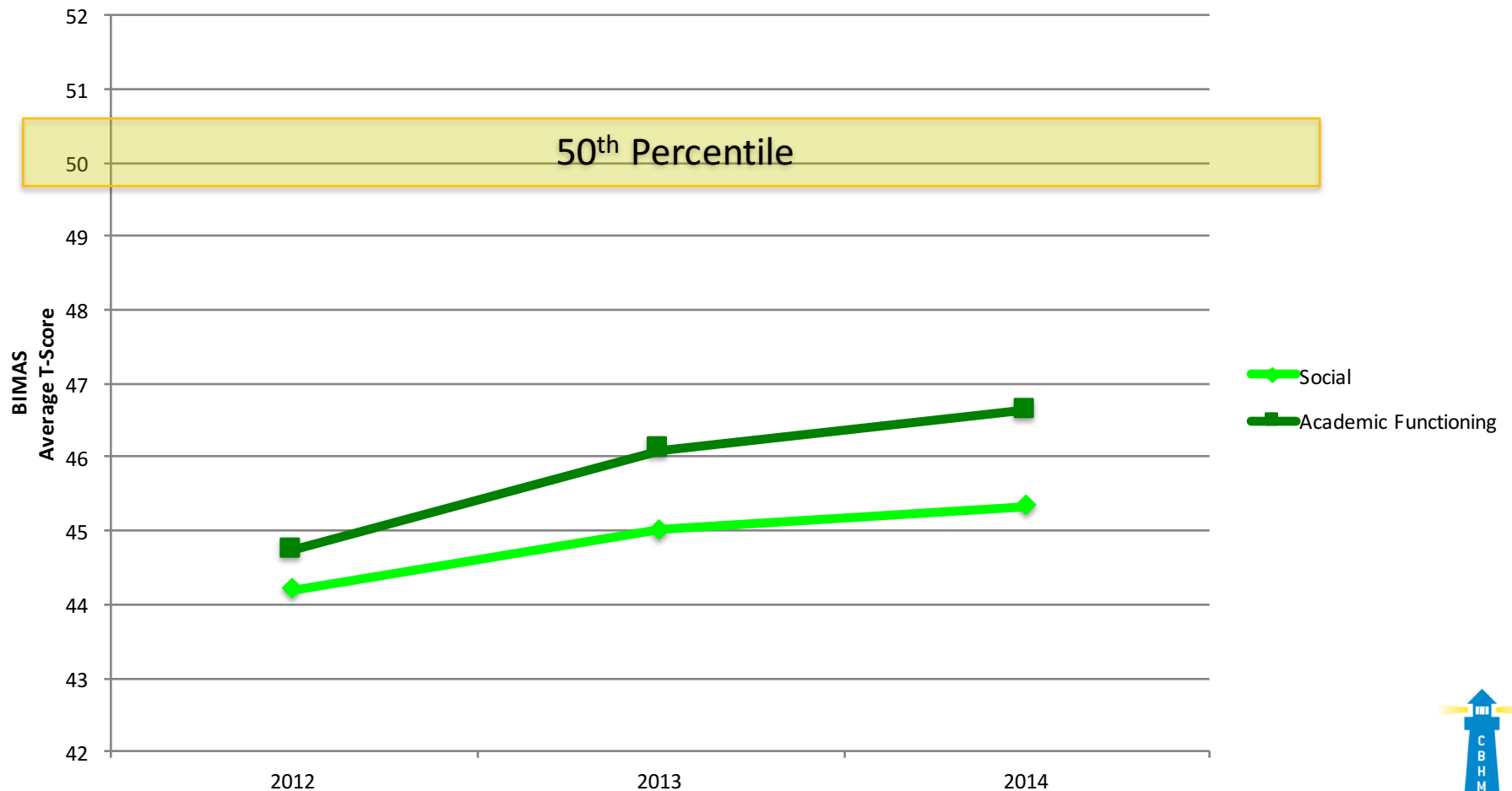
CBHM **STUDENT** Outcomes

Cohort 1: Decrease in Problem Behaviors



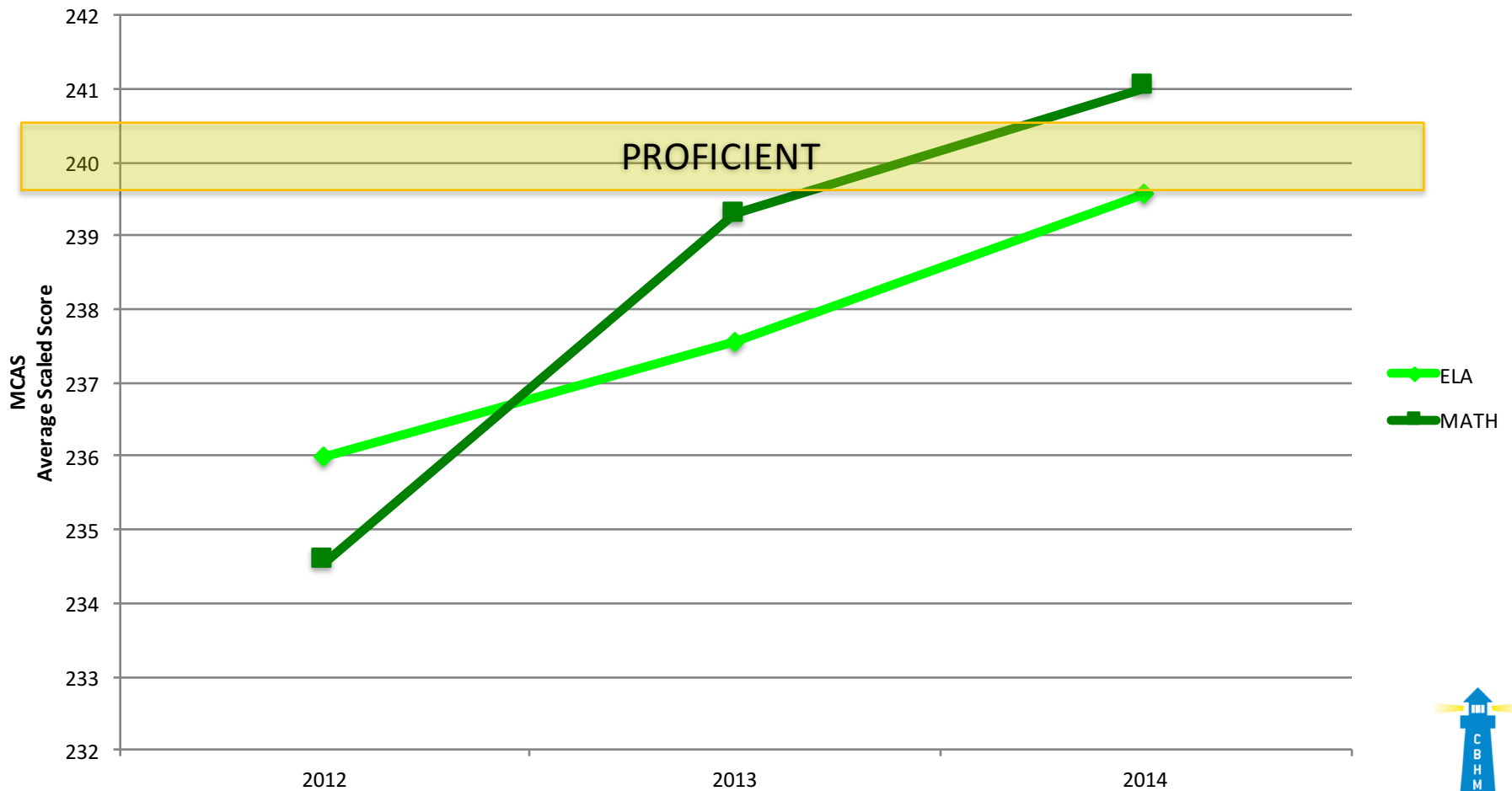
CBHM **STUDENT** Outcomes

Cohort 1: Increase in Positive Behaviors



CBHM **STUDENT** Outcomes

Cohort 1: Increase in Academic Outcomes



District-University Partnership

- Support the effective implementation of evidence-based practices
 - Training of current staff with professional development
 - Build capacity to identify and address student needs
 - Cross walk between NASP training standards and CBHM activities



District-University Partnership

- Mutually beneficial relationship
 - Advance training of students of multiple programs
 - In collaboration with Massachusetts School Psychologists Trainers Group (MA-SPT)
 - Building capacity for services at schools
 - Build leadership skills of both practitioners and students



Training

- Student Training of Specialist Level
 - Full domains of practice
 - Be involved in school-level change
 - Working with all students in a building
- Student Training of Doctoral Level
 - Be involved in district-level change
 - Supervision/mentoring experiences
 - Leadership opportunities
 - Expanded roles and learning for supervisors – aligning work with NASP Practice Model

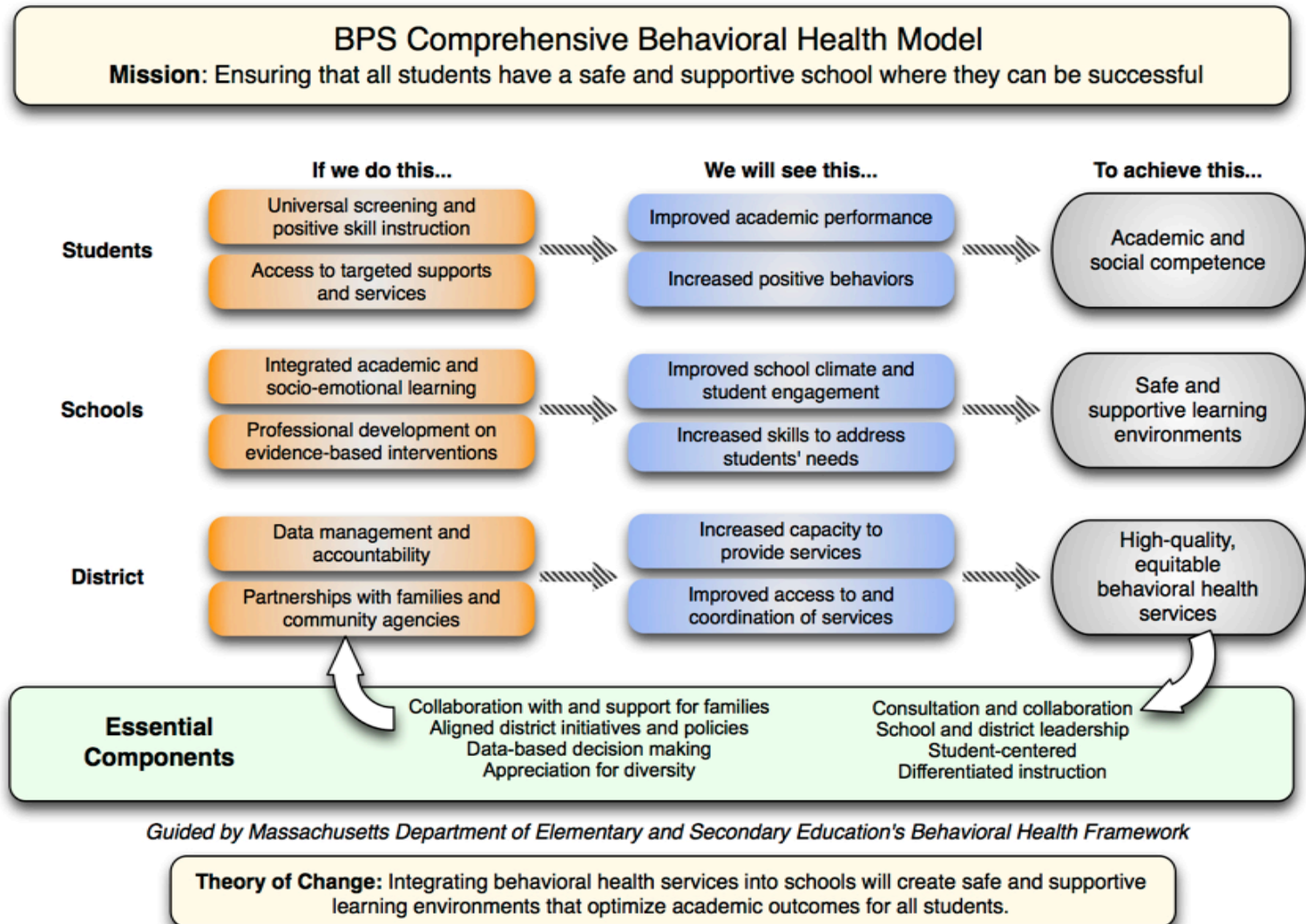


Research Team

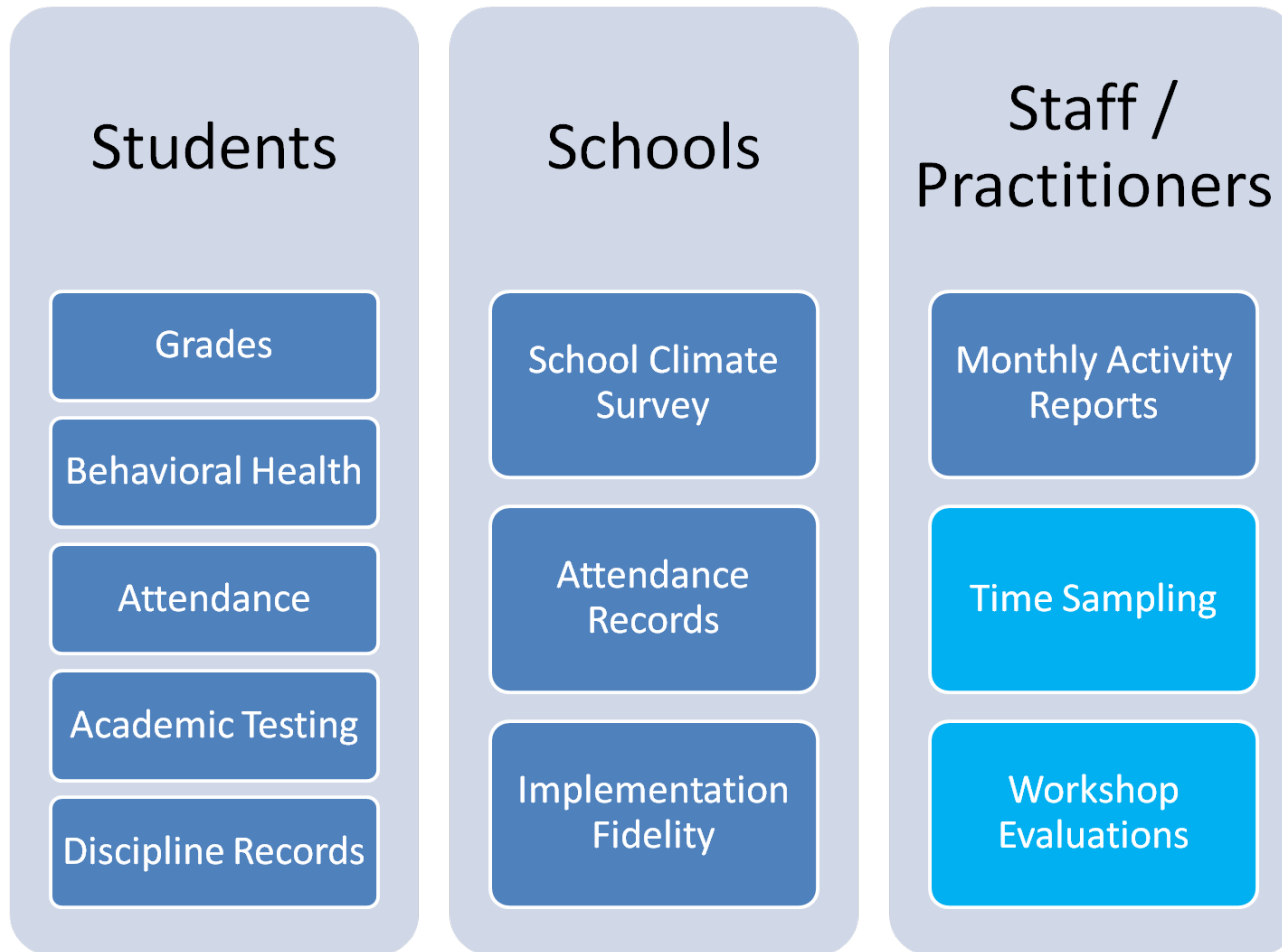
- Research and evaluation skills
 - Create research team with Children's Hospital
 - Develop a logic model
 - Presentation and publication opportunities
 - Program evaluations to enhance service delivery



About CBHM



DATA DATA DATA



Time Sampling

- Are school psychologists in CBHM schools spending their days differently than school psychologists in non CBHM schools?
- Time Sampling Form
 - Documents activities during school day
 - Captures one week
 - Categories organized by Tiers
 - 2013-2014 form & 2014-2015 form



Time Sampling (2013-2014)

Tier 1 = Tier 1 & Consultation

Tier 2 = Tier 2 & FBA

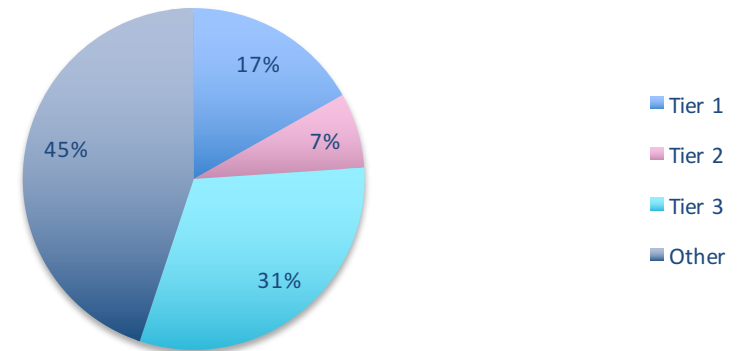
Tier 3 = Assessment, IEP, Case

Other = Supervision, Crisis, Other

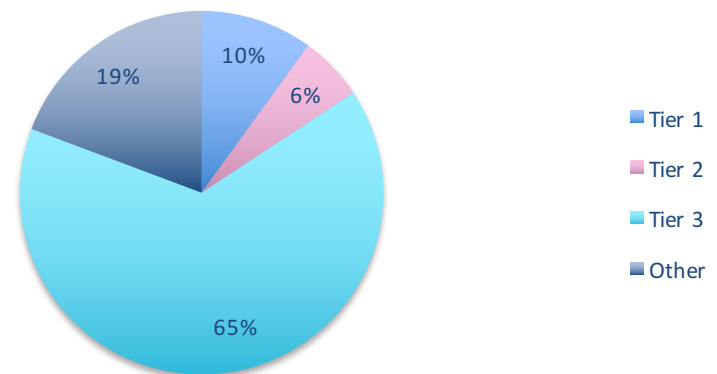
Sample in December, 2013

- 40 School Psychologists
- 18/20 CBHM schools
- 76 non-CBHM schools

CBHM



NonCBHM



Time Sampling Categories

	CODE	CATEGORY	DESCRIPTION
Tier I	PD	Professional Development	Participation in and presentation of Professional development activities in relation to your job/role.
	Consult	Consultation and Training	Consultation with parents, teachers, outside agencies and providers, etc. Include any training provided as part of the consultation.
	Meetings	System/Administrative level Meetings	Meetings that are focused at the system, organizational or administrative level. Include grade level and other such meetings.
Tier II	FBA/BIP	FBA/Behavior Intervention	FBA/ Behavior intervention related time, including observation.
	INT	Non-IEP Counseling and Interventions	Activities related to group counseling and intervention.
	Meetings	Problem Solving Meetings	The broad range of student specific or student focused meetings. Include meetings that are focused on a specific or targeted group of students.
Tier III	Assessment	Assessment	All Special Education assessment related activity (including: Score, Interpret, Write, File Review, etc.)
	Counseling	IEP Counseling	Activities related to IEP based counseling and intervention.
	Consult	IEP Consultation	Activities related to IEP based consultation
	Meetings	IEP Meeting	Meetings regarding IEP/504 determinations, including OR, RE, UR
Other	Collaboration	Community Engagement & Service Integration	Meetings that are focused on work with and collaboration with other agencies and providers. These tend not to be student specific.
	Supervision	Professional Supervision and Peer Mentoring	Providing or participating in professional supervision, peer mentoring, usually with other school psychologists and related professionals.
	Other	Other Activities not covered above	This is a place to track time involved in activities that do not fit the above categories.



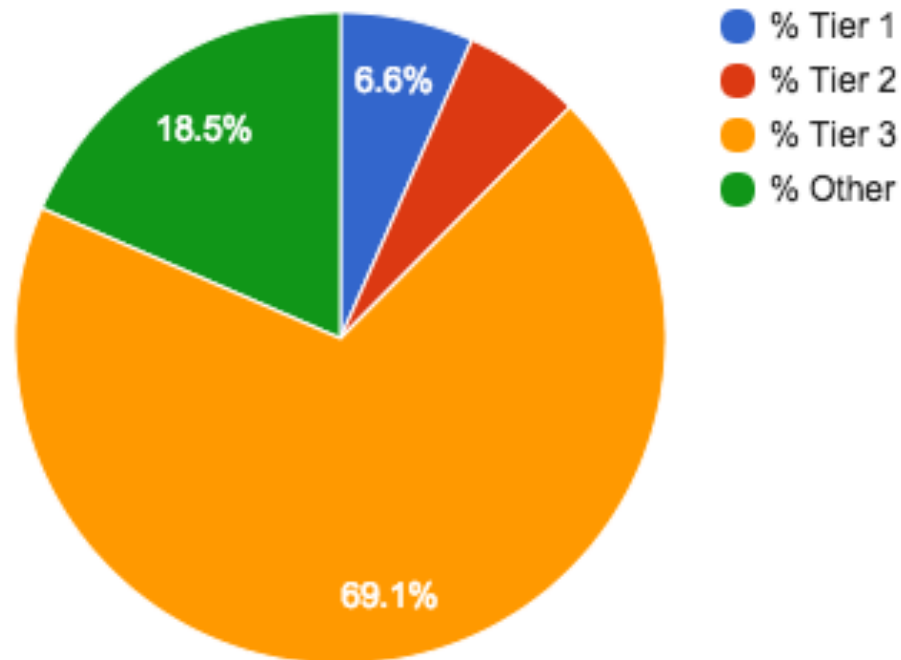
Time Sampling 2014-2015

- Sampled in June, 2015
 - 44 School Psychologists
 - Sampled by activity (13 in total), organized by Tier
 - Analyzed by activity and Tier
- Limitations/Considerations
 - 1 day removed from data collection (CBHM showcase)
 - Days at multiple schools - can't determine activity per location - 19 Staff surveys eliminated
 - Not anonymous - tied to professional by name and building



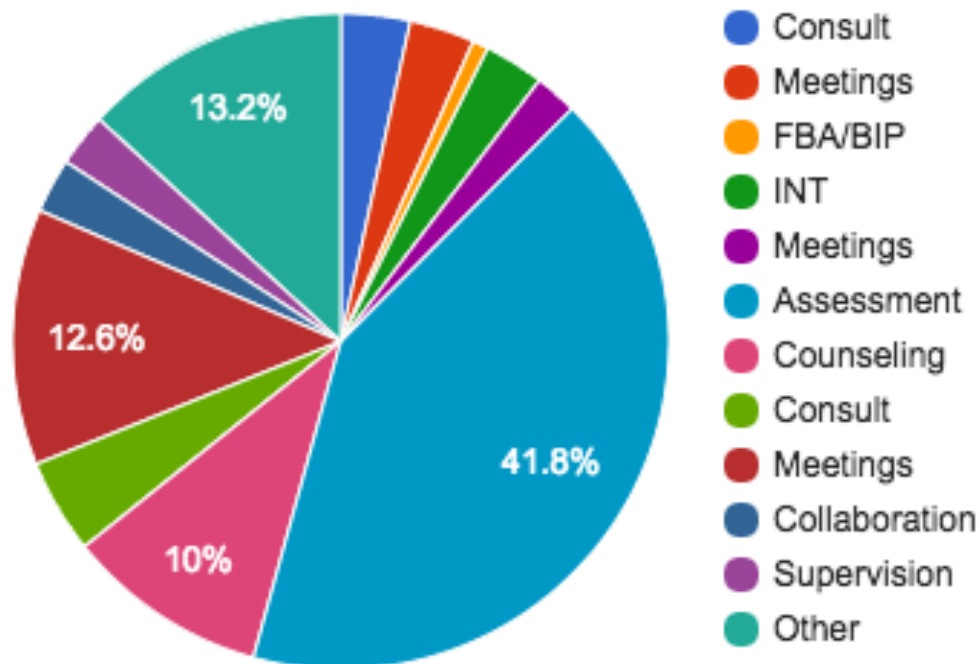
Time Sampling 2014-2015

Percent of Activity Type for ALL Schools



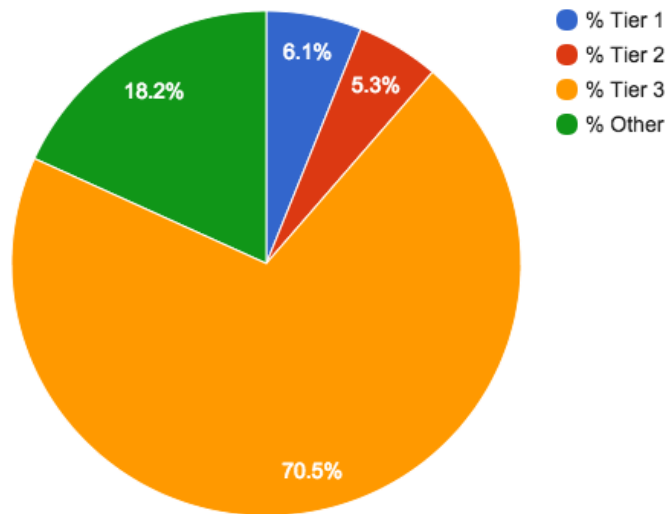
Time Sampling 2014-2015

Percent of each activity for All Schools

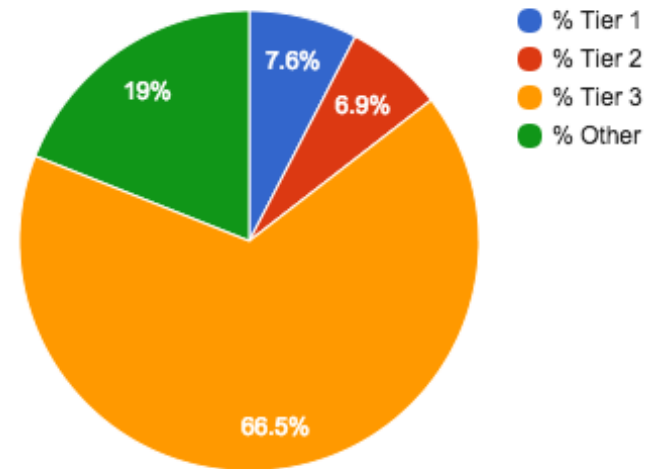


Time Sampling 2014-2015

Percent of Activity Type by School for CBHM Schools



Percent of Activity Type by School for Non-CBHM Schools



Workshop Evaluation

Presentation Topics

- CBHM Overview
- Data Based Decision Making
- Classroom Management
- Problem Solving and Universal Screening
- School-Wide PBIS
- Universal Screening Tutorial
- Universal Screening Results and Data
- Universal Screening Data & Progress Monitoring

2014-2015 Year

- Review and ratings for workshop content and presenter
- Anonymous responding
- Limitations
 - Changes in survey items
 - Buy-in for online completion option

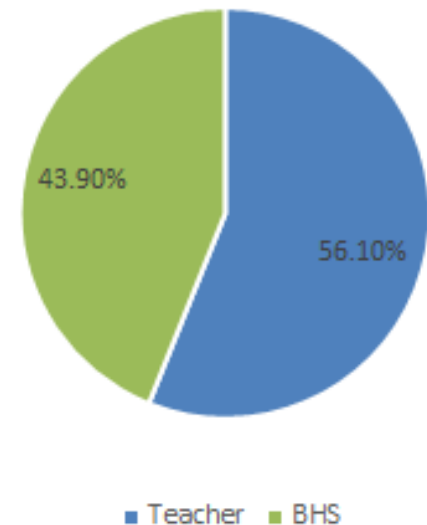


Workshop Evaluation

Participant Information

- 205 total surveys collected
- 12+ trainers/speakers
- 9 trainings in the sample
- Participant info:
 - Teachers
 - Behavioral Health Staff (BHS)

Workshop Evaluation: Participants

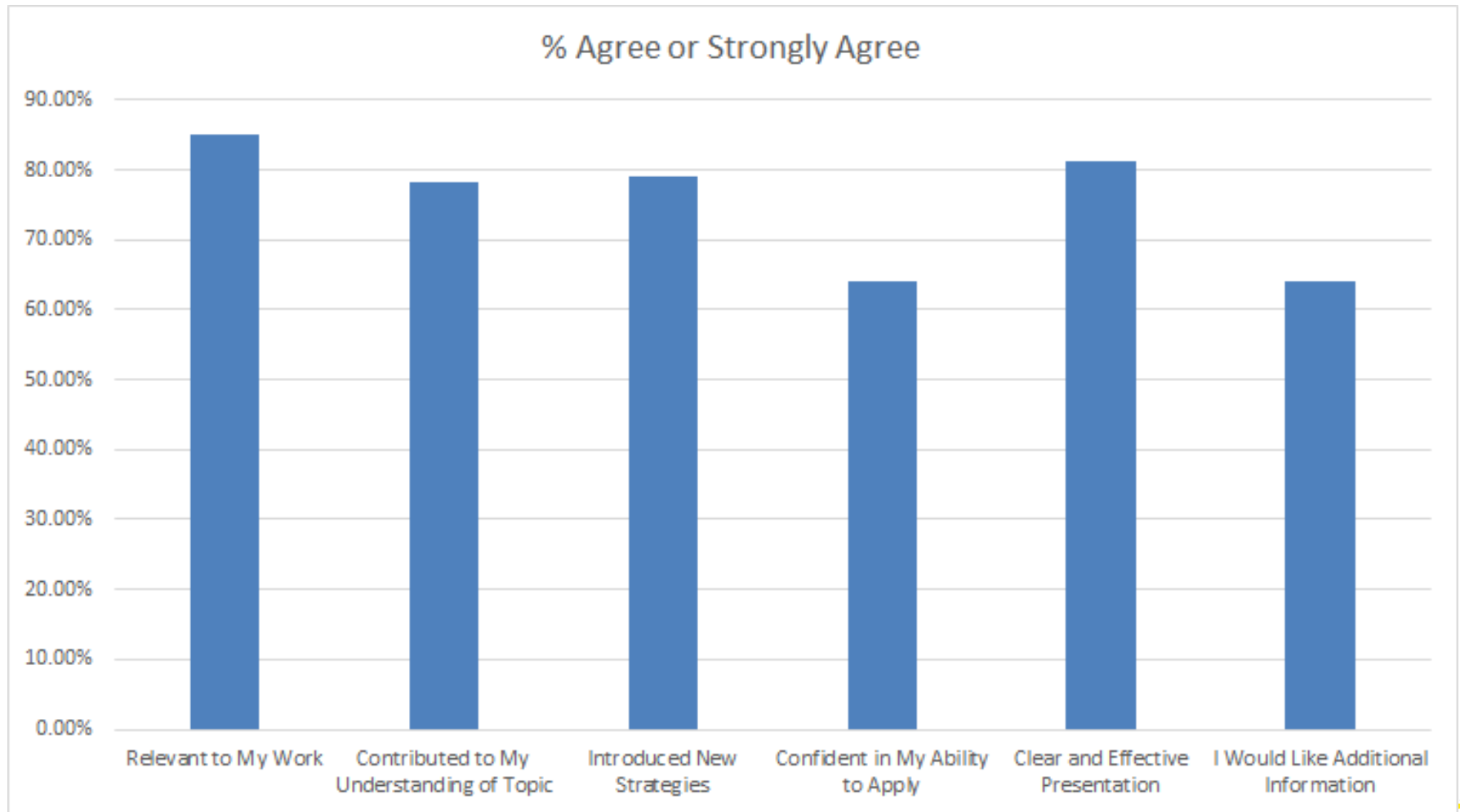


Workshop Evaluation Questions

- This workshop topic was relevant to my work
- This workshop contributed to my understanding of the topic
- The workshop introduced new strategies that I can use in my work
- I feel confident in my ability to apply the information presented in this workshop
- The workshop leader presented the information clearly and effectively
- I would like to receive additional training on this topic
- My overall rating of this workshop

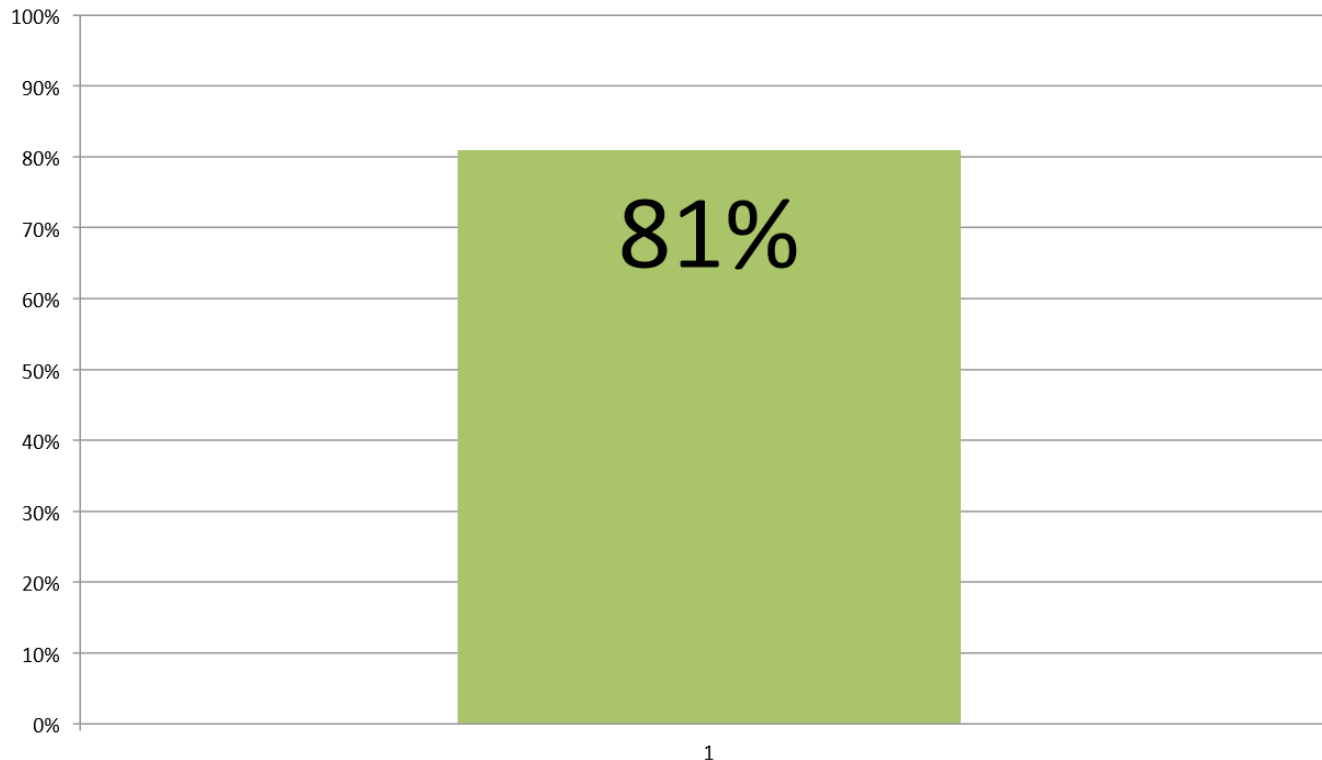


Workshop Evaluation



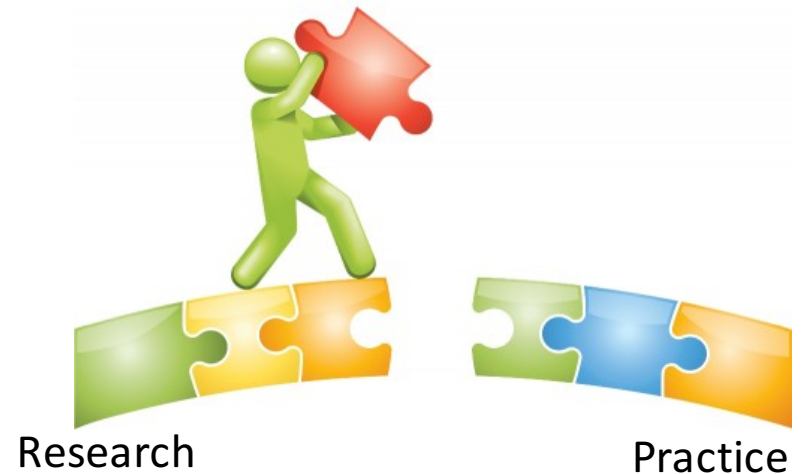
Workshop Evaluation

**Percent of Points Earned on CBHM Workshop Evaluations for
School Based CBHM PD**
(SY 14-15 | Teacher Ratings)



Future Directions

- Bridge between Research and Practice
- Evaluation Plan
- Implementation Guides



DATA DATA DATA!

Students

Grades

Behavioral Health

Attendance

Academic Testing

Discipline Records

Schools

School Climate
Survey

Attendance
Records

Implementation
Fidelity

Staff / Practitioners

Monthly Activity
Reports

Time Sampling

Workshop
Evaluations



Questions?

- Comments
- Suggestions
- Complaints
- Encouragements



Contact and Information

- **Contact Info:**

Victoria Sheppard: sheppardv@gmail.com

Samantha Broadhead: paris.samantha@gmail.com

Dr. Jill Snyder: jsnyder2@bostonpublicschools.org

Dr. Melissa Pearrow: Melissa.Pearrow@umb.edu

- **Website:**

cbhmboston.com

[@CBHMboston](https://twitter.com/CBHMboston)

