

WELCOME

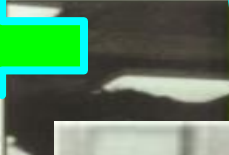
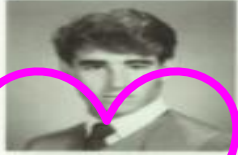
- ❖ Silently read Donald Graves' poem, Freddy.
- ❖ Jot down any thoughts that come to your mind.

ADVISORY

I believe in its potential

Seniors

Class of '85



Research supports the benefit of advisory

**

WASC calls us to create a structured and clearly defined support system for each level for academic planning and post high school goals and to ensure students receive adequate counseling services.

**

DOE focus on social emotional learning.

**

LAYERS OF SAFETY NETS

Advisory allows a group of students to be connected to each other and to a caring adult.

Layers of support include:

Teachers, Coaches,
Counselors, Special Programs,
Administrators and Advisors



REQUESTED NORMS

- ❖ Be open to advisory
- ❖ Try to stay positive
- ❖ Be flexible
- ❖ Give it a chance by communicating issues & problem solving

BINDERS

1 minute

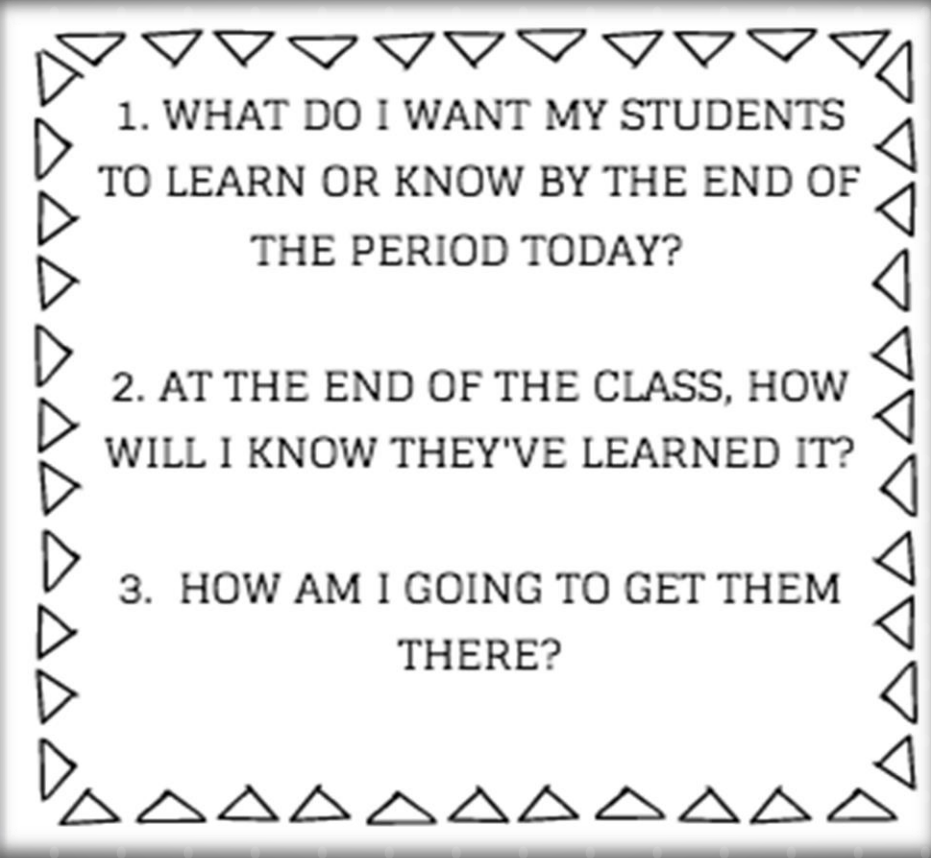
Use a post-it for things you want to know more about or questions.

TOOLBOX Honoka`a High & Inter. School



Dragon Pride Block:
***Advisory Binder**
***Response to Intervention**
***Enrichment**





1. WHAT DO I WANT MY STUDENTS
TO LEARN OR KNOW BY THE END OF
THE PERIOD TODAY?

2. AT THE END OF THE CLASS, HOW
WILL I KNOW THEY'VE LEARNED IT?

3. HOW AM I GOING TO GET THEM
THERE?

Dragon PRIDE Block

Wednesday and Thursdays



ADVISORY

1st qtr: 18 sessions
2nd, 3rd, 4th qtr:
4 sessions per qtr.



RTI

1st qtr: No RtI
2nd, 3rd, 4th qtr:
By core
content-14-16
sessions



ENRICHMENT

1st qtr: No Sessions
2nd, 3rd, 4th qtr:
By core
content-14-16
sessions

Goals

Advisory: That each student has a relationship with a caring adult on campus that provides monitoring and ongoing support.
PTP Completion

RtI: Specific core support by a particular PLC focused on improved skills

Enrichment: An addition to a course to provide an extra opportunity for learning.



Resources

Advisory: Set topic expectations, ideas and websites, Templates, Competitions, Prizes, and Promotions

RtI: Planning and Coaching Support as needed/requested.

Enrichment: Menu of possible activities, coaching ideas and support if requested.



Grades

Advisory: SU for each quarter based on Attendance and Participation.

- Must earn "S" for 3 qtrs. to pass for year. To earn an "S" student must attend 14 sessions for 1st qtr. and participate.
- 2nd, 3rd, 4th qtr. SU based upon teacher discretion of attendance and participation.
- Student must earn "S" for all four years. PLUS complete the PTP to earn the PTP credit.
- Students may "change" previous year grades by completing Volunteer/Service Hours.

RtI: To be determined by Core PLC that is conducting the RtI work.

Enrichment: Grade is averaged in with the course grade at teacher's discretion.



Dragon Pride Block Schedule Wednesdays & Thursdays

30 minute blocks held right before lunch

1st Quarter and 1st Week of 2nd Quarter
16 Advisory Sessions

2nd Quarter-RtI and Enrichment
ELA Focus

3rd and 4th Quarter-RtI and Enrichment
Math and Science Focus

2nd, 3rd, 4th Quarter- Advisory will meet one time each month.

LOGISTICS

- ❖ Students are randomly assigned
- ❖ Advisories will stay together and with their advisor for 10th-12th grade.
- ❖ Attendance will be taken on Infinite Campus.

GRADING

- ❖ S/U for each quarter based on Attendance and Participation
- ❖ Must earn "S" for 3 quarters to pass for the year.
- ❖ 1st quarter: Students must attend 11 of 14 sessions and participate.
- ❖ 2nd, 3rd, 4th quarters: Teacher determines S or U based on attendance (75%) and participation.
- ❖ Students must earn S for all four years, PLUS complete the PTP to earn the PTP credit.
- ❖ Students may change previous years' grade(s) by completing 30 Community Service Hours.
- ❖ Seniors will need to be on alert.

Advisory Outline and Plans

1. The Binder

2. Google Drive:

<https://drive.google.com/drive/folders/OB-JU4m0wy0PIMXQtZjYxcC1tYm8?usp=sharing>

2017-18 School Year Official, Advisory, Lesson Plans and Resources

3. Google Classroom:

<https://classroom.google.com/r/Njk5ODc3MzQ5OVpa/sort-last-name>

Tentative Advisory Outline 16 Sessions

	August 9&10	No Advisory
1	August 16	One to One Technology Readiness Information and Quiz
2	August 17	One to One Technology Readiness Information and Quiz
3	August 23	Purpose of Advisory-Why and Goals
4	August 24	Get to Know You Activities/<u>Ice-</u> <u>Breakers/ Fun</u>
5	August 30 <i>*Teacher self assess relationship level</i>	PRIDE COMPETITION (Perseverance)- Balloon Tower
6	August 31	* <u>Bowl of Yum Delivered to Winning Advisory for Balloon Tower Branding Your Advisory Activity</u>
7	Sept. 6	Continued Branding Your Advisory Activity- PRIDE COMPETITION (Building Advisory Pride)
8	Sept. 7	* <u>Bowl of Yum Delivered to Winning Advisory for Branding Understanding Infinite Campus and How to Calculate Your GPA 85 Challenge</u> *All Advisories that choose to calculate their <u>class</u> GPA and are above a 3.0 win goodies
9	Sept. 13	Thinking Maps Training pt. 1

Flexibility is a Good Thing

Switch August 23 to the
beginning

Advisory Nos. 5, 11 & 15 asks the teacher to self assess relationship level (optional)

Let's talk about Freddy

Goal of an advisory period

CREATE RELATIONSHIPS BETWEEN EACH STUDENT
AND A CARING ADULT ON CAMPUS

Self-assess the development of the relationships you are forming with your advisory students.

Suggestion: Rate yourself on a scale of 1-5 for each student and record on this sheet with a date at the top. Keep this sheet in your binder and self-assess again after 5 more advisory periods.

Rating Scale:

5 = I know this student very well and I believe they trust me.

3 = I am beginning to know this student's story and they are comfortable with me.

1 = I know this student's name but I have not begun to form a relationship with this student.

Lesson Plans

Format follows the 3 Questions:
Objective, Assessment & Path

NOTE: Teaching is individual and there will always be nuance between styles. The plans are not scripts. They are guidelines with suggestions.

THE PURPOSE OF ADVISORY

<https://www.youtube.com/watch?v=T-IPUIULOKI>

FIRST FEW ADVISORY LESSONS- PREVIEW

- ❖ Future ready
- ❖ Ice breakers
- ❖ Pride competition: Perseverance
- ❖ Branding your advisory
- ❖ Infinite Campus and calculating GPA

QUESTIONS?



**DRAGON
P.R.I.D.E.**

PERSEVERANCE · RESPECT · INTEGRITY · DETERMINATION · ENTHUSIASM