



THE OHIO STATE UNIVERSITY

COLLEGE OF SOCIAL WORK

**The School-Family-Community Coordinator: The Missing Piece
in Cultivating Partnerships to Increase Academic Achievement,
School Climate, and Social Emotional Learning**

Authors: Catelen Ramsey, Angelic
Dean, Noelle Britt, Tasha Henderson,
and Dawn Anderson-Butcher





Overview and Objectives

- Introductions
- Why are we here?
- What is the role of a School-Family-Community Coordinator (SFCC)?
- Overview of the Functions of SFCC: Two Case Examples
- How to Get Started
- Activity
- How Could This Fit Into Your Program?
- Questions & Debrief



Why are we here?

- School systems cannot address all the needs
- Research supports how school, family, community partnerships improve various aspects of schools
- Partnerships exist to add resources
- Partnerships have to be strategic



Community Collaboration Model For School Improvement (CCMSI)

Aims to get conditions right for learning by centering the school as the hub for resources and supports.

Schools organize their resources across 5 pathways:

- Academic Learning
- Youth Development & School Climate
- Parent/Family Engagement & Support
- Health & Social Services
- Community Partnerships



What is the role of a School Family Community Coordinator (SFCC)?

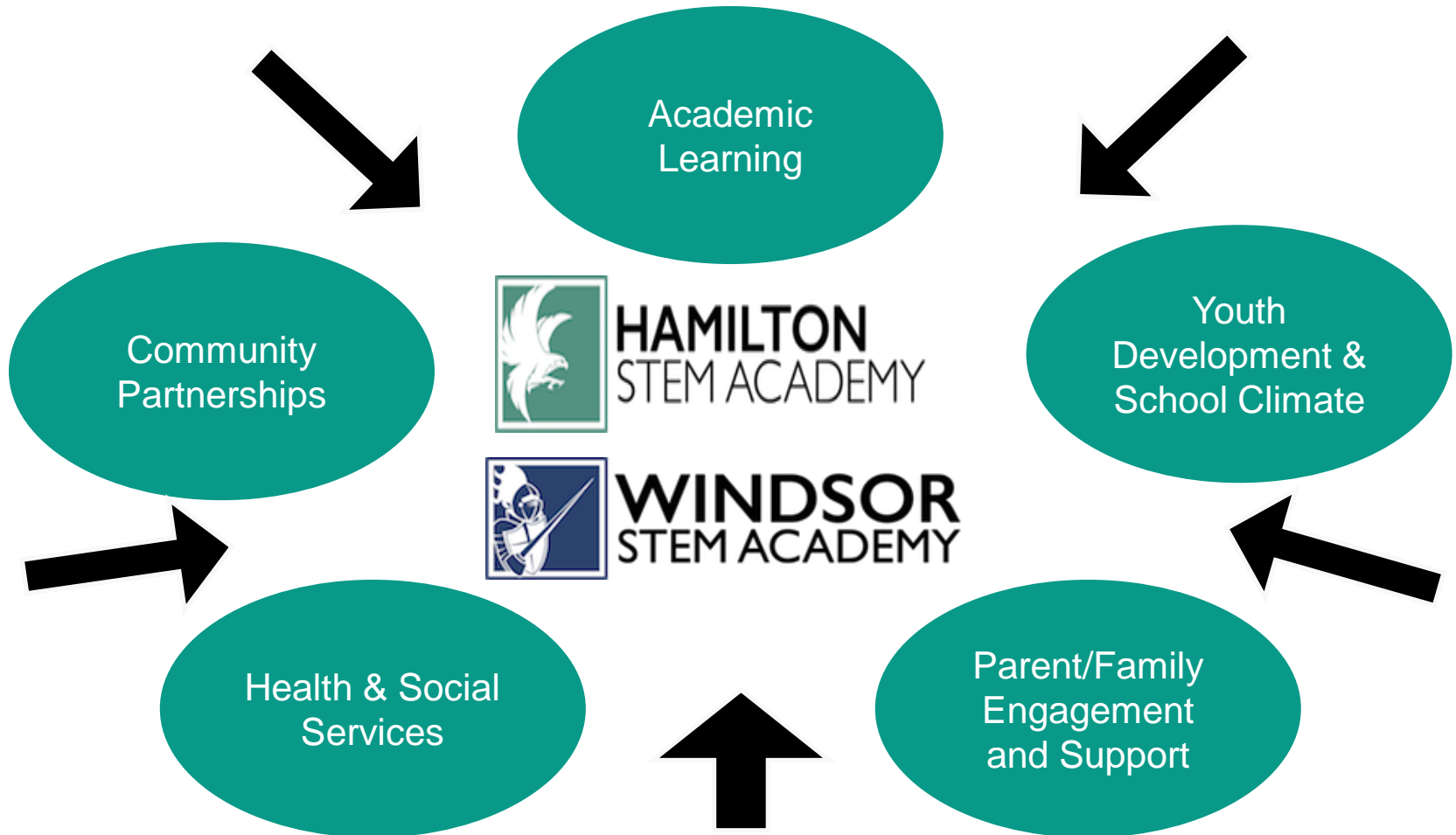
A full-time employee in the school hired to oversee, manage, and develop partnerships in support of school success.

The SFCC role within a school can be broken into three main functions, including

1. Collaborative Planning
2. Service Coordination and Integration
3. System Level Capacity Building



Community Collaboration Model for School Improvement





THE OHIO STATE UNIVERSITY

COLLEGE OF SOCIAL WORK

Hamilton STEM Academy



2018-2019 Demographics

- Prekindergarten-6th Grade
- 420 students

Race	Total %	% Male	% Female
Black	73.6%	39.3%	34.3%
Hispanic	4%	2.9%	1.1%
Multiracial	9.6%	6%	3.6%
White	11.9%	5.6%	6.3%
Native American	0.9%	0.9%	0%



THE OHIO STATE UNIVERSITY

COLLEGE OF SOCIAL WORK

Windsor STEM Academy



2018-2019 Demographics

- Prekindergarten-6th Grade
- 420 students
- 100% Free or Reduced Lunch
- SFCC began in April 2019

Race	Total %	% Male	% Female
Black	83.1%	44.3%	38.8%
Hispanic	3.7%	1.4%	2.3%
Multiracial	6.7%	4.1%	2.6%
White	6.2%	3.8%	2.4%



Collaborative Planning Process

Hamilton STEM & Windsor STEM

- Students, teachers/staff, and parents/caregivers annually complete the CAYCI School Experience Survey—used to inform yearly needs and resource assessment Serve as contact for most community partners and events that filter through the building
- High focus surrounding family engagement
- Host various events in collaboration with community partners, and staff

Hamilton STEM

- PTO
- Participation with various school teams within the building surrounding family engagement and climate

Windsor STEM

- Member of the Building Leadership Team, Social Emotional Learning Team, and Windsor Youth Collaborative



Service Coordination and Integration

Hamilton STEM & Windsor STEM

- Attend and support Multi-tiered System of Support and other meetings surrounding student interventions
- Provide resource linkages and find community partners to fill those needs
- Working with school guidance counselor, social worker, administrators, psychologist, and other key players to create a streamlined referral process



System-Level Capacity Building

Hamilton STEM & Windsor STEM

- Build new relationships, while maintaining and strengthening existing relationships with community partners, to support school needs

Hamilton STEM

- Creation of newsletter and other communication platforms for parents/caregivers with input from school staff
- Provide Professional Development opportunities for staff

Windsor STEM

- Lead weekly Community Provider Team meetings, to enhance collaboration, alignment, and accountability of in- and out-of-school-time community partners
- Collaborate with Family Ambassador to create monthly newsletter and other communication/feedback platforms
- Will provide additional Professional Development for school staff on CCMSI and related topics for school staff

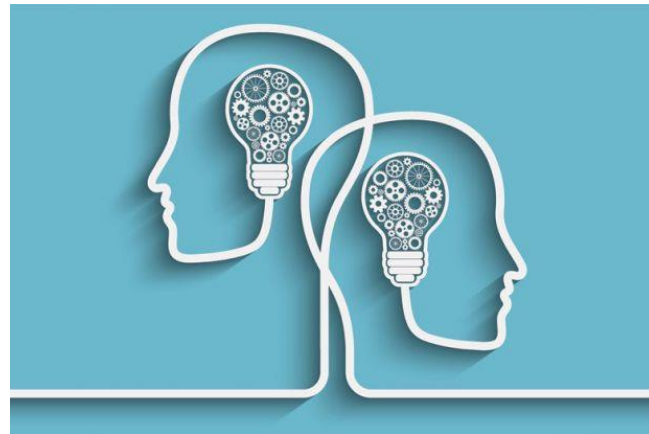


Activity

- Get into groups of 2-3
- You will be given a case scenario
- Think about the SFCC role through the lens of each function:
 1. Collaborative Planning
 2. Service Coordination and Integration
 3. System Level Capacity Building
- Share out



Reflect on the space you're in!





Questions and Debrief!



Contact Information:

Catelen Ramsey: ramsey.281@osu.edu

Angelic Dean: dean.1141@osu.edu

Noelle Britt. Britt.65@osu.edu